

KIR2DL2/3 RABBIT PAB

Cat.#: N225183

Product Name: Anti-KIR2DL2/3 Rabbit pAb

Synonyms: KIR2DL3; CD158B2; KIRCL23; NKAT2; Killer cell immunoglobulin-like receptor 2DL3; CD158 antigen-like family member B2; KIR-023GB; Killer inhibitory receptor cl 2-3; MHC class I NK cell receptor; NKAT2a; NKAT2b Natural killer-associated transcript 2; NKAT-2; p58 natural killer cell receptor clone CL-6; p58 NK receptor CL-6; p58.2 MHC class-I-specific NK receptor; CD158b2; KIR2DS2; CD158J; NKAT5; Killer cell immunoglobulin-like receptor 2DS2

UNIPROT ID: P43628/P43631

Background: Receptor on natural killer (NK) cells for HLA-C alleles (HLA-Cw1, HLA-Cw3 and HLA-Cw7). Inhibits the activity of NK cells thus preventing cell lysis.

Immunogen: The antiserum was produced against synthesized peptide derived from the Internal region of human KIR2DL3/KIR2DS2. AA range:131-180

Applications: WB,ELISA

Recommended Dilutions: WB: 1/500-1/1000 ELISA: 1/10000

Host Species: Rabbit

Clonality: Rabbit Polyclonal

Clone ID: -

MW: Calculated MW: 38 kDa; Observed MW: 38 kDa

Isotype: IgG

Purification: Affinity Purified

Species Reactivity: Human

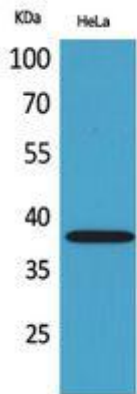
Conjugation: Unconjugated

Modification: Unmodified

Constituents: PBS (without Mg²⁺ and Ca²⁺), pH 7.3 containing 50% glycerol, 0.5% BSA and 0.02% sodium azide

Research Areas: Immunology

Storage & Shipping: Store at -20°C. Avoid repeated freezing and thawing



Western blot analysis of KIR2DL2/3 in HeLa lysates using KIR2DL2/3 antibody.