

## KIFC1 RABBIT MAB

**Cat.#:** N262448

**Product Name:** Anti-KIFC1 Rabbit Monoclonal Antibody

**Synonyms:** HSET; KNSL2

**UNIPROT ID:** Q9BW19

**Background:** Minus end-directed microtubule-dependent motor required for bipolar spindle formation. May contribute to movement of early endocytic vesicles.

**Immunogen:** A synthetic peptide of human KIFC1

**Applications:** WB,IHC-F,IHC-P,ICC/IF,IP

**Recommended Dilutions:** WB: 1/500-1/1000 IHC: 1/50-1/100 IF: 1/50-1/200 IP: 1/20

**Host Species:** Rabbit

**Clonality:** Rabbit Monoclonal

**Clone ID:** R03-3E4

**MW:** Calculated MW: 74 kDa; Observed MW: 74 kDa

**Isotype:** IgG

**Purification:** Affinity Purified

**Species Reactivity:** Human,Mouse

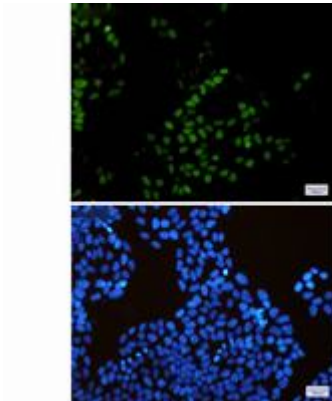
**Conjugation:** Unconjugated

**Modification:** Unmodified

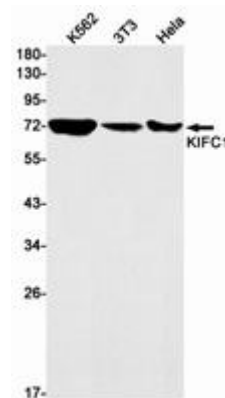
**Constituents:** PBS (without Mg<sup>2+</sup> and Ca<sup>2+</sup>), pH 7.3 containing 50% glycerol, 0.5% BSA and 0.02% sodium azide

**Research Areas:** Signal Transduction

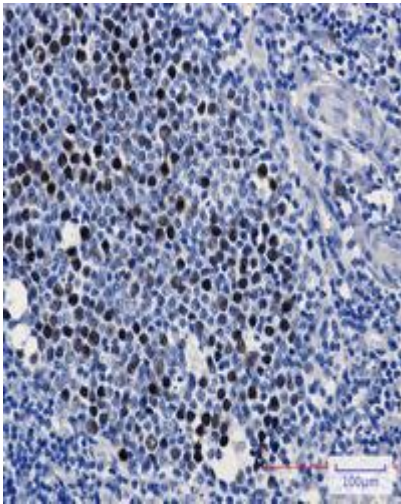
**Storage & Shipping:** Store at -20°C. Avoid repeated freezing and thawing



Immunocytochemistry analysis of KIFC1 (green) in HeLa using KIFC1 antibody, and DAPI (blue)



Western blot analysis of KIFC1 in K562, 3T3, HeLa lysates using KIFC1 antibody.



Immunohistochemistry analysis of paraffin-embedded Human tonsil using KIFC1 antibody. High-pressure and temperature Sodium Citrate pH 6.0 was used for antigen retrieval.