

KIF5B RABBIT MAB

Cat.#: N262447

Product Name: Anti-KIF5B Rabbit Monoclonal Antibody

Synonyms: KNS; KINH; KNS1; UKHC; HEL-S-61

UNIPROT ID: P33176

Background: Microtubule-dependent motor required for normal distribution of mitochondria and lysosomes. Can induce formation of neurite-like membrane protrusions in non-neuronal cells in a ZFYVE27-dependent manner. Regulates centrosome and nuclear positioning during mitotic entry. During the G2 phase of the cell cycle in a BICD2-dependent manner, antagonizes dynein function and drives the separation of nuclei and centrosomes (PubMed:20386726). Required for anterograde axonal transportation of MAPK8IP3/JIP3 which is essential for MAPK8IP3/JIP3 function in axon elongation.

Immunogen: A synthetic peptide of human KIF5B

Applications: WB,IHC-F,IHC-P,ICC/IF,IP

Recommended Dilutions: WB: 1/500-1/1000 IHC: 1/50-1/100 IF: 1/50-1/200 IP: 1/20

Host Species: Rabbit

Clonality: Rabbit Monoclonal

Clone ID: R04-6G8

MW: Calculated MW: 110 kDa; Observed MW: 110 kDa

Isotype: IgG

Purification: Affinity Purified

Species Reactivity: Human,Mouse,Rat

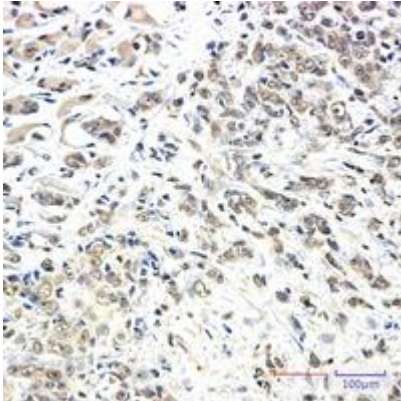
Conjugation: Unconjugated

Modification: Unmodified

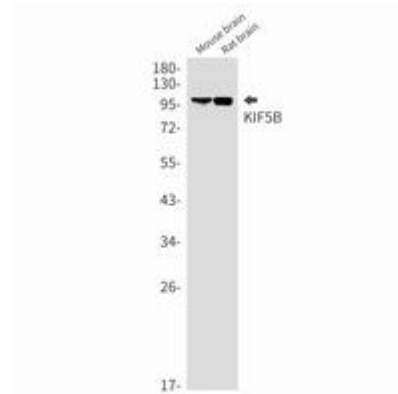
Constituents: PBS (without Mg²⁺ and Ca²⁺), pH 7.3 containing 50% glycerol, 0.5% BSA and 0.02% sodium azide

Research Areas: Signal Transduction

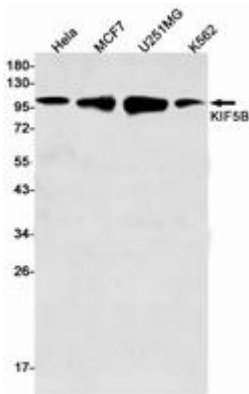
Storage & Shipping: Store at -20°C. Avoid repeated freezing and thawing



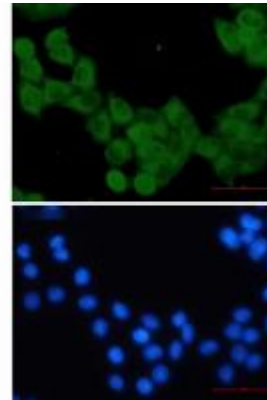
Immunohistochemistry analysis of paraffin-embedded Human breast cancer using KIF5B antibody. High-pressure and temperature Sodium Citrate pH 6.0 was used for antigen retrieval.



Western blot analysis of KIF5B in mouse brain, rat brain lysates using KIF5B antibody.



Western blot analysis of KIF5B in HeLa, MCF-7, U251MG, K562 lysates using KIF5B antibody.



Immunocytochemistry analysis of KIF5B (green) in HeLa using KIF5B antibody, and DAPI (blue).