

KIF2C RABBIT PAB

Cat.#: S218776

Product Name: Anti-KIF2C Rabbit Polyclonal Antibody

Synonyms: MCAK; CT139; KNSL6

UNIPROT ID: Q99661 (Gene Accession - BC014924)

Background: This gene encodes a kinesin-like protein that functions as a microtubule-dependent molecular motor. The encoded protein can depolymerize microtubules at the plus end, thereby promoting mitotic chromosome segregation. Alternative splicing results in multiple transcript variants.

Immunogen: Fusion protein of human KIF2C

Applications: ELISA, IHC

Recommended Dilutions: IHC: 50-200; ELISA: 5000-10000

Host Species: Rabbit

Clonality: Rabbit Polyclonal

Isotype: Immunogen-specific rabbit IgG

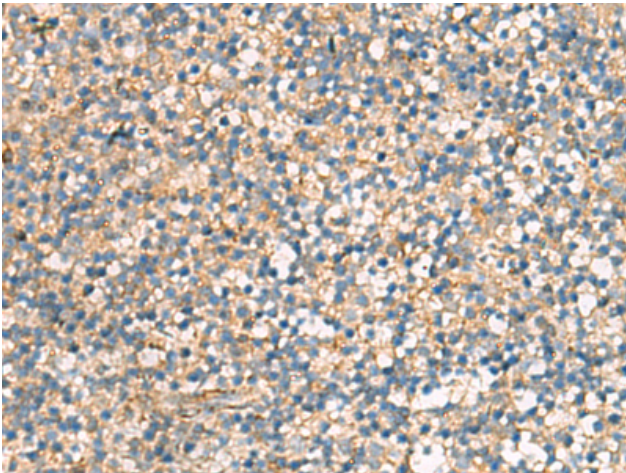
Purification: Antigen affinity purification

Species Reactivity: Human, Mouse, Rat

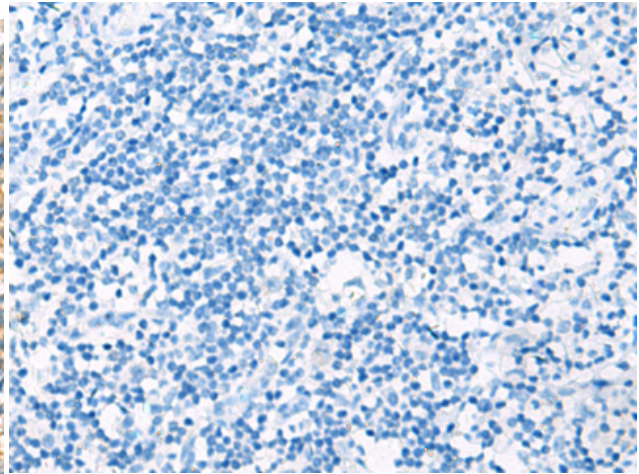
Constituents: PBS (without Mg²⁺ and Ca²⁺), pH 7.4, 150 mM NaCl, 0.05% Sodium Azide and 40% glycerol

Research Areas: Signal Transduction

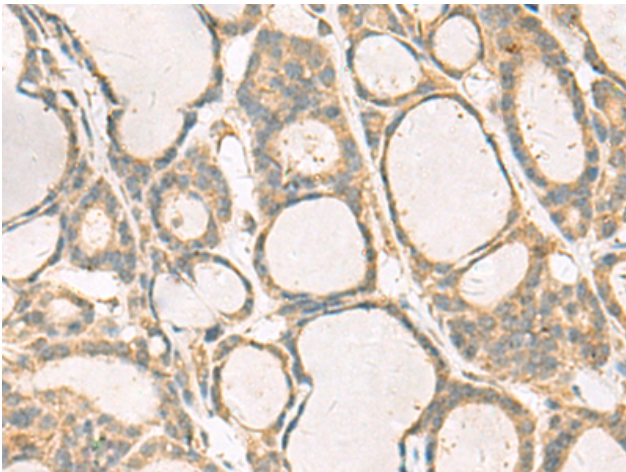
Storage & Shipping: Store at -20°C. Avoid repeated freezing and thawing



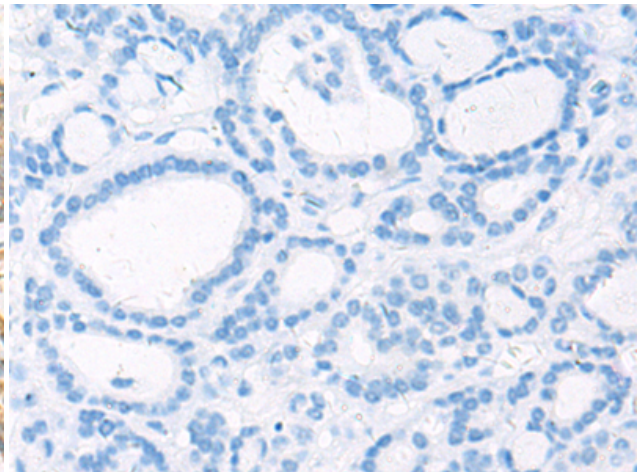
Immunohistochemistry analysis of paraffin embedded Human tonsil tissue using 218776(KIF2C Antibody) at a dilution of 1/70(Cytoplasm).



In comparison with the IHC on the left, the same paraffin-embedded Human tonsil tissue is first treated with the fusion protein and then with 218776(Anti-KIF2C Antibody) at dilution 1/70.



The image on the left is immunohistochemistry of paraffin-embedded Human thyroid cancer tissue using 218776(Anti-KIF2C Antibody) at a dilution of 1/70.



In comparison with the IHC on the left, the same paraffin-embedded Human thyroid cancer tissue is first treated with fusion protein and then with D225154(Anti-KIF2C Antibody) at dilution 1/70.