

## KIF20A RABBIT PAB

**Cat.#:** S217561

**Product Name:** Anti-KIF20A Rabbit Polyclonal Antibody

**Synonyms:** MKLP2; RAB6KIFL

**UNIPROT ID:** O95235 (Gene Accession - BC012999)

**Background:** KIF20A (kinesin family member 20A), also known as Rabkinesin-6, RAB6KIFL (Rab6-interacting kinesin-like protein), GG10\_2 or MKLP2 (mitotic kinesin-like protein 2), is a 890 amino acid protein that contains one kinesin-motor domain and belongs to the Kinesin-like protein family. KIF20A locates to the Golgi apparatus and interacts with guanosine triphosphate (GTP)-bound forms of RAB 6. KIF20A may be responsible for the retrograde RAB 6 regulated transport of Golgi membranes and related vesicles along microtubules.

**Immunogen:** Fusion protein of human KIF20A

**Applications:** ELISA, WB, IHC

**Recommended Dilutions:** IHC: 50-200;WB: 200-1000;ELISA: 1000-2000

**Host Species:** Rabbit

**Clonality:** Rabbit Polyclonal

**Isotype:** Immunogen-specific rabbit IgG

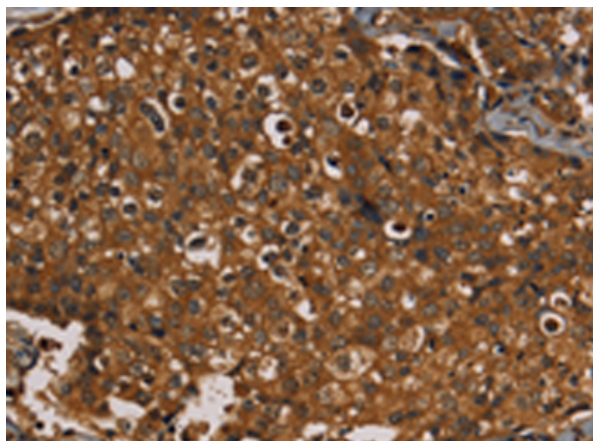
**Purification:** Antigen affinity purification

**Species Reactivity:** Human, Mouse

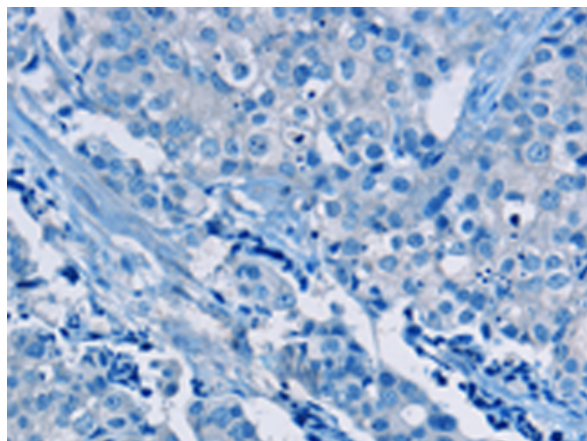
**Constituents:** PBS (without Mg<sup>2+</sup> and Ca<sup>2+</sup>), pH 7.4, 150 mM NaCl, 0.05% Sodium Azide and 40% glycerol

**Research Areas:** Signal Transduction, Cancer

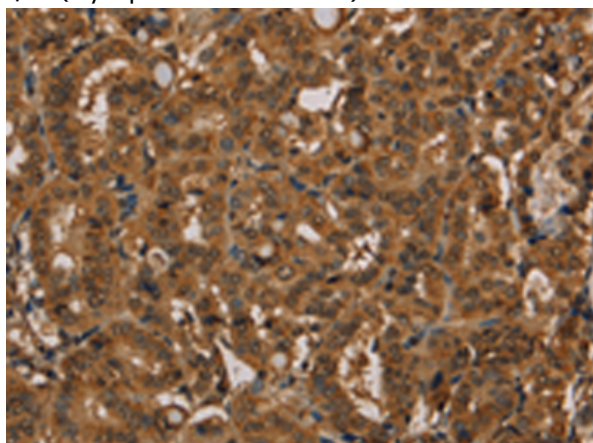
**Storage & Shipping:** Store at -20°C. Avoid repeated freezing and thawing



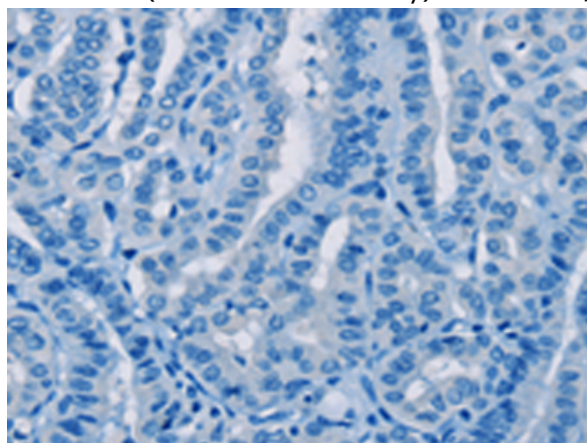
Immunohistochemistry analysis of paraffin embedded Human breast cancer tissue using 217561(KIF20A Antibody) at a dilution of 1/20(Cytoplasm or Nucleus).



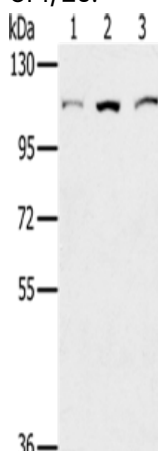
In comparison with the IHC on the left, the same paraffin-embedded Human breast cancer tissue is first treated with the fusion protein and then with 217561(Anti-KIF20A Antibody) at dilution 1/20.



The image on the left is immunohistochemistry of paraffin-embedded Human thyroid cancer tissue using 217561(Anti-KIF20A Antibody) at a dilution of 1/20.



In comparison with the IHC on the left, the same paraffin-embedded Human thyroid cancer tissue is first treated with fusion protein and then with D222587(Anti-KIF20A Antibody) at dilution 1/20.



Gel: 6%SDS-PAGE, Lysate: 40 µg;  
Lane 1-3: K562 cells, 293T cells, hela cells;  
Primary antibody: 217561(KIF20A Antibody) at dilution 1/400;  
Secondary antibody: Goat anti rabbit IgG at 1/8000 dilution;  
Exposure time: 10 seconds



# Product Description

Pioneering GTPase and Oncogene Product Development since 2010

---