

## KI67 (10B6) MOUSE MAB

**Cat.#:** N261192

**Product Name:** Anti-Ki67 (10B6) Mouse Monoclonal Antibody

**Synonyms:** MKI67; Antigen KI-67

**UNIPROT ID:** P46013

**Background:** Required to maintain individual mitotic chromosomes dispersed in the cytoplasm following nuclear envelope disassembly (PubMed:27362226). Associates with the surface of the mitotic chromosome, the perichromosomal layer, and covers a substantial fraction of the chromosome surface (PubMed:27362226).

**Immunogen:** Synthetic peptide corresponding to aa (CEDLAGFKELFQTPG) of human KI67, conjugated to KLH.

**Applications:** IHC-P

**Recommended Dilutions:** IHC: 1/50-1/100

**Host Species:** Mouse

**Clonality:** Mouse Monoclonal

**Clone ID:** 10B6-7D9-9H1

**MW:** -

**Isotype:** IgG2b

**Purification:** Ascitic Fluid

**Species Reactivity:** Human

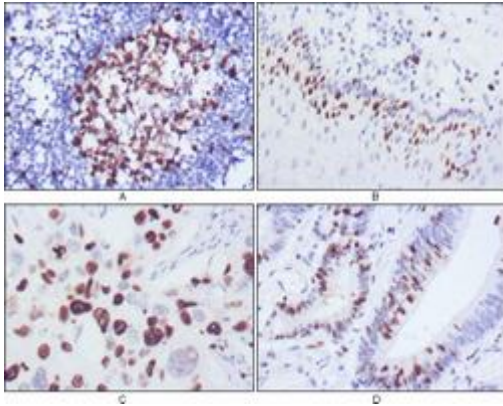
**Conjugation:** Unconjugated

**Modification:** Unmodified

**Constituents:** PBS (without Mg<sup>2+</sup> and Ca<sup>2+</sup>), pH 7.3 containing 50% glycerol, 0.5% BSA and 0.02% sodium azide

**Research Areas:** Cell Biology

**Storage & Shipping:** Store at -20°C. Avoid repeated freezing and thawing



Immunohistochemistry analysis of paraffin-embedded Human lymph node (A), esophagus (B), lung cancer (C), rectum cancer (D), using Ki67 (10B6) antibody with DAB staining. High-pressure and temperature Sodium Citrate pH 6.0 was used for antigen retrieval.