

KDM5C RABBIT PAB

Cat.#: S214859

Product Name: Anti-KDM5C Rabbit Polyclonal Antibody

Synonyms: MRXJ; SMCX; MRX13; MRXSJ; XE169; MRXSCJ; JARID1C; DXS1272E

UNIPROT ID: P41229 (Gene Accession - NP_004178)

Background: This gene is a member of the SMCY homolog family and encodes a protein with one ARID domain, one JmjC domain, one JmjN domain and two PHD-type zinc fingers. The DNA-binding motifs suggest this protein is involved in the regulation of transcription and chromatin remodeling. Mutations in this gene have been associated with X-linked mental retardation. Alternative splicing results in multiple transcript variants.

Immunogen: Synthetic peptide of human KDM5C

Applications: ELISA, IHC

Recommended Dilutions: IHC: 30-150; ELISA: 2000-10000

Host Species: Rabbit

Clonality: Rabbit Polyclonal

Isotype: Immunogen-specific rabbit IgG

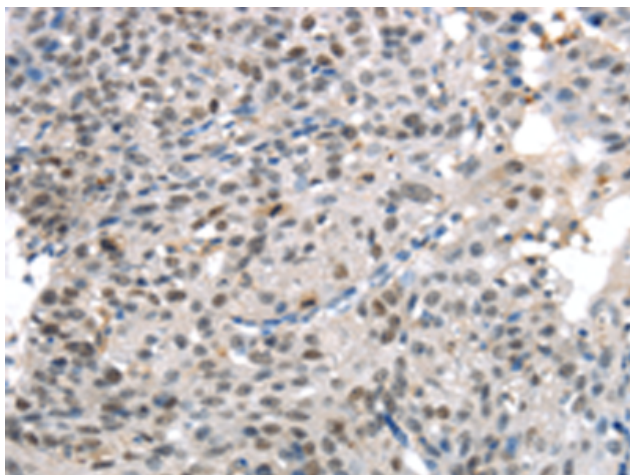
Purification: Antigen affinity purification

Species Reactivity: Human

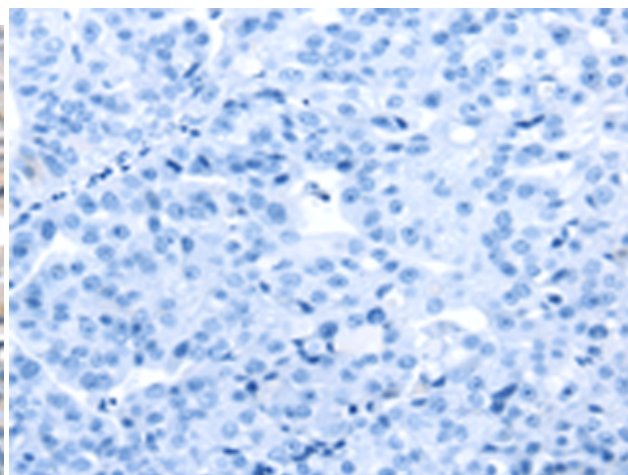
Constituents: PBS (without Mg²⁺ and Ca²⁺), pH 7.4, 150 mM NaCl, 0.05% Sodium Azide and 40% glycerol

Research Areas: Epigenetics and Nuclear Signaling

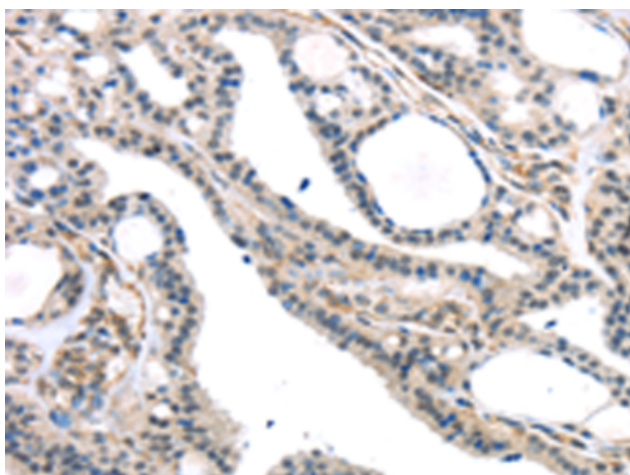
Storage & Shipping: Store at -20°C. Avoid repeated freezing and thawing



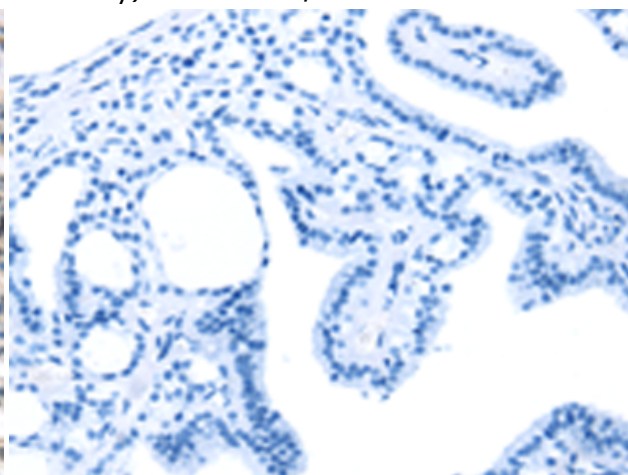
Immunohistochemistry analysis of paraffin-embedded Human breast cancer tissue using 214859(KDM5C Antibody) at a dilution of 1/45(Nucleus).



In comparison with the IHC on the left, the same paraffin-embedded Human breast cancer tissue is first treated with the synthetic peptide and then with 214859(Anti-KDM5C Antibody) at dilution 1/45.



The image on the left is immunohistochemistry of paraffin-embedded Human thyroid cancer tissue using 214859(Anti-KDM5C Antibody) at a dilution of 1/45.



In comparison with the IHC on the left, the same paraffin-embedded Human thyroid cancer tissue is first treated with synthetic peptide and then with D162454(Anti-KDM5C Antibody) at dilution 1/45.