

KDM1A RABBIT PAB

Cat.#: S219579

Product Name: Anti-KDM1A Rabbit Polyclonal Antibody

Synonyms: AOF2; CPRF; KDM1; LSD1; BHC110

UNIPROT ID: O60341 (Gene Accession - BC048134)

Background: This gene encodes a nuclear protein containing a SWIRM domain, a FAD-binding motif, and an amine oxidase domain. This protein is a component of several histone deacetylase complexes, though it silences genes by functioning as a histone demethylase. Alternative splicing results in multiple transcript variants.

Immunogen: Fusion protein of human KDM1A

Applications: ELISA, IHC

Recommended Dilutions: IHC: 50-200; ELISA: 5000-10000

Host Species: Rabbit

Clonality: Rabbit Polyclonal

Isotype: Immunogen-specific rabbit IgG

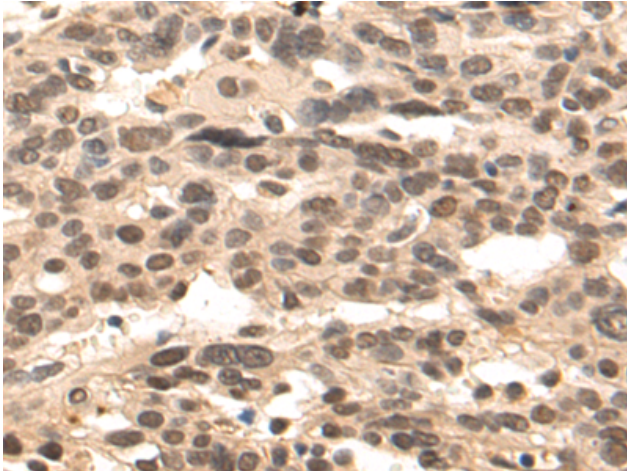
Purification: Antigen affinity purification

Species Reactivity: Human, Mouse

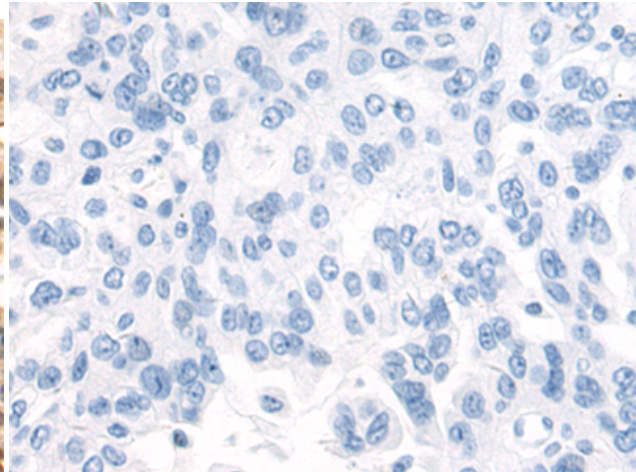
Constituents: PBS (without Mg²⁺ and Ca²⁺), pH 7.4, 150 mM NaCl, 0.05% Sodium Azide and 40% glycerol

Research Areas: Epigenetics and Nuclear Signaling

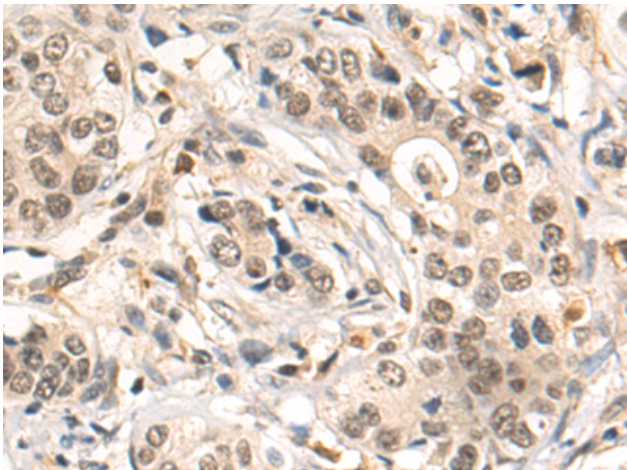
Storage & Shipping: Store at -20°C. Avoid repeated freezing and thawing



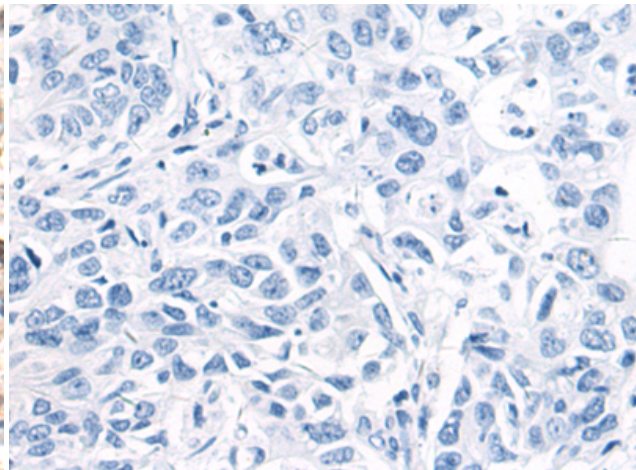
Immunohistochemistry analysis of paraffin embedded Human breast cancer tissue using 219579(KDM1A Antibody) at a dilution of 1/75(Nucleus).



In comparison with the IHC on the left, the same paraffin-embedded Human breast cancer tissue is first treated with the fusion protein and then with 219579(Anti-KDM1A Antibody) at dilution 1/75.



The image on the left is immunohistochemistry of paraffin-embedded Human gastric cancer tissue using 219579(Anti-KDM1A Antibody) at a dilution of 1/75.



In comparison with the IHC on the left, the same paraffin-embedded Human gastric cancer tissue is first treated with fusion protein and then with D227832(Anti-KDM1A Antibody) at dilution 1/75.