

KDM1A (1E5) MOUSE MAB

Cat.#: N261003

Product Name: Anti-KDM1A (1E5) Mouse Monoclonal Antibody

Synonyms: KDM1A; AOF2; KDM1; KIAA0601; LSD1; Lysine-specific histone demethylase 1A; BRAF35-HDAC complex protein BHC110; Flavin-containing amine oxidase domain-containing protein 2

UNIPROT ID: O60341

Background: Histone demethylase that demethylates both 'Lys-4' (H3K4me) and 'Lys-9' (H3K9me) of histone H3, thereby acting as a coactivator or a corepressor, depending on the context. Acts by oxidizing the substrate by FAD to generate the corresponding imine that is subsequently hydrolyzed. Acts as a corepressor by mediating demethylation of H3K4me, a specific tag for epigenetic transcriptional activation. Demethylates both mono- (H3K4me1) and di-methylated (H3K4me2) H3K4me. May play a role in the repression of neuronal genes.

Immunogen: Purified recombinant human KDM1/LSD1 protein fragments expressed in E.coli.

Applications: WB, ICC/IF, IP

Recommended Dilutions: WB: 1/500-1/1000 IF: 1/50-1/200 IP: 1/20

Host Species: Mouse

Clonality: Mouse Monoclonal

Clone ID: 1E5-H2

MW: Calculated MW: 93 kDa; Observed MW: 110 kDa

Isotype: IgG1

Purification: Affinity Purified

Species Reactivity: Human, Monkey

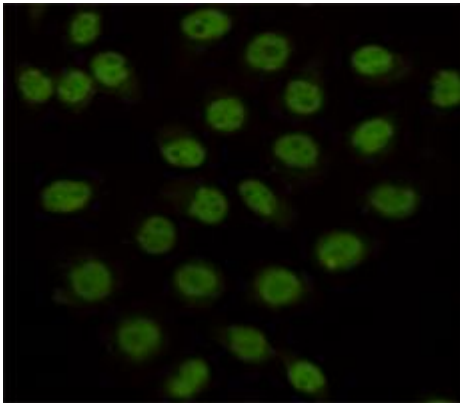
Conjugation: Unconjugated

Modification: Unmodified

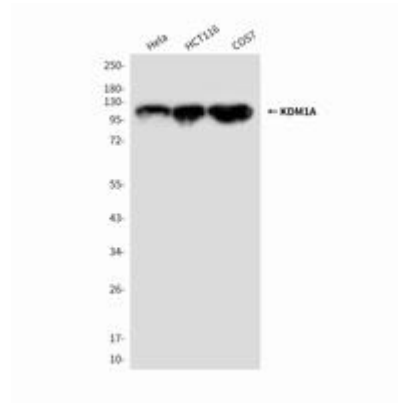
Constituents: PBS (without Mg²⁺ and Ca²⁺), pH 7.3 containing 50% glycerol, 0.5% BSA and 0.02% sodium azide

Research Areas: Epigenetics, Histone methylation

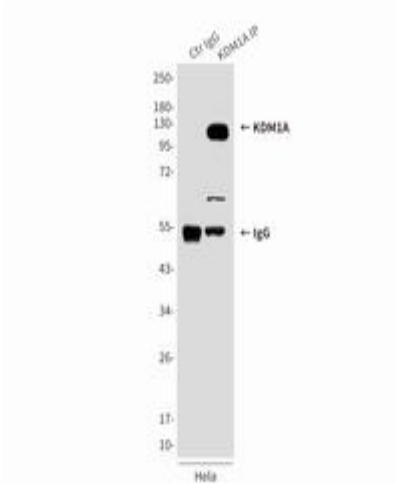
Storage & Shipping: Store at -20°C. Avoid repeated freezing and thawing



Immunocytochemistry analysis of KDM1A (1E5) in HeLa using KDM1/LSD1 antibody.



Western blot analysis of KDM1/LSD1 in HeLa, HCT116 and COS7 lysates using KDM1/LSD1 antibody.



Immunoprecipitation analysis of KDM1A (1E5) in HeLa lysates using KDM1/LSD1 antibody.