

KDEL RABBIT PAB

Cat.#: N225570

Product Name: Anti-KDEL Rabbit pAb

Synonyms: Lys-Asp-Glu-Leu (KDEL)

UNIPROT ID: P24390

Background: Determines the specificity of the luminal ER protein retention system. Required for the retention of luminal endoplasmic reticulum proteins. Determines the specificity of the luminal ER protein retention system. Also required for normal vesicular traffic through the Golgi. This receptor recognizes K-D-E-L.

Immunogen: A synthesized peptide derived from human KDEL

Applications: WB, IHC-P, ICC/IF, FC

Recommended Dilutions: WB: 1/500-1/1000 IHC: 1/50-1/100 IF: 1/50-1/200 FC: 1/50-1/100

Host Species: Rabbit

Clonality: Rabbit Polyclonal

Clone ID: -

MW: Calculated MW: 25 kDa; Observed MW: 78KD kDa

Isotype: IgG

Purification: Affinity Chromatography

Species Reactivity: Human, Mouse, Rat

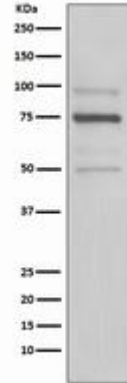
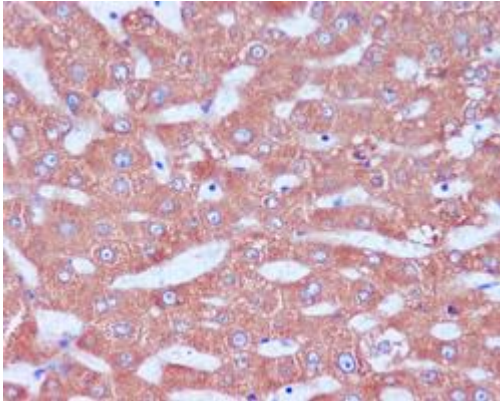
Conjugation: Unconjugated

Modification: Unmodified

Constituents: PBS (without Mg²⁺ and Ca²⁺), pH 7.3 containing 50% glycerol, 0.5% BSA and 0.02% sodium azide

Research Areas: Tags & Cell Markers

Storage & Shipping: Store at -20°C. Avoid repeated freezing and thawing



Immunohistochemistry analysis of paraffin-embedded Human liver using KDEL antibody. High-pressure Sodium Citrate and temperature pH 6.0 was used for antigen retrieval.

Western blot analysis of KDEL in HeLa lysates using KDEL antibody.