

KCTD9 RABBIT MAB

Cat.#: N262443

Product Name: Anti-KCTD9 Rabbit Monoclonal Antibody

Synonyms: BTB/POZ domain-containing protein KCTD9

UNIPROT ID: Q7L273

Background: Substrate-specific adapter of a BCR (BTB-CUL3-RBX1) E3 ubiquitin-protein ligase complex, which mediates the ubiquitination of target proteins, leading to their degradation by the proteasome.

Immunogen: A synthetic peptide of human KCTD9

Applications: WB, ICC/IF

Recommended Dilutions: WB: 1/500-1/1000 IF: 1/50-1/200

Host Species: Rabbit

Clonality: Rabbit Monoclonal

Clone ID: R08-5H2

MW: Calculated MW: 43 kDa; Observed MW: 43 kDa

Isotype: IgG

Purification: Affinity Purified

Species Reactivity: Human

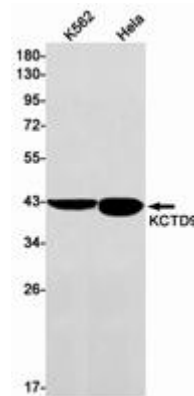
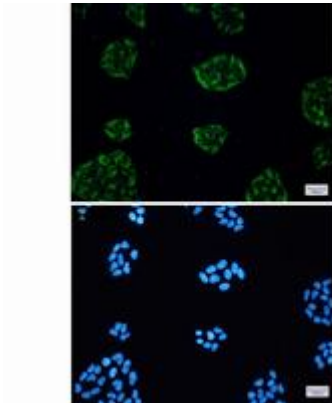
Conjugation: Unconjugated

Modification: Unmodified

Constituents: PBS (without Mg²⁺ and Ca²⁺), pH 7.3 containing 50% glycerol, 0.5% BSA and 0.02% sodium azide

Research Areas: Neuroscience

Storage & Shipping: Store at -20°C. Avoid repeated freezing and thawing



Immunocytochemistry analysis of KCTD9 (green) in HeLa using KCTD9 antibody, and DAPI (blue)

Western blot analysis of KCTD9 in K562, HeLa lysates using KCTD9 antibody.