

## KCTD7 RABBIT PAB

**Cat.#:** S216058

**Product Name:** Anti-KCTD7 Rabbit Polyclonal Antibody

**Synonyms:** EPM3; CLN14

**UNIPROT ID:** Q96MP8 (Gene Accession - NP\_694578 )

**Background:** This gene encodes a member of the potassium channel tetramerization domain-containing protein family. Family members are identified on a structural basis and contain an amino-terminal domain similar to the T1 domain present in the voltage-gated potassium channel. Mutations in this gene have been associated with progressive myoclonic epilepsy-3. Alternative splicing results in multiple transcript variants.

**Immunogen:** Synthetic peptide of human KCTD7

**Applications:** ELISA, WB, IHC

**Recommended Dilutions:** IHC: 50-300;WB: 1000-5000;ELISA: 5000-10000

**Host Species:** Rabbit

**Clonality:** Rabbit Polyclonal

**Isotype:** Immunogen-specific rabbit IgG

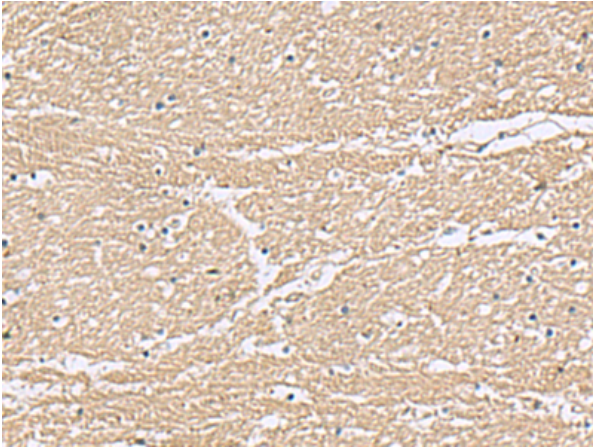
**Purification:** Antigen affinity purification

**Species Reactivity:** Human, Mouse, Rat

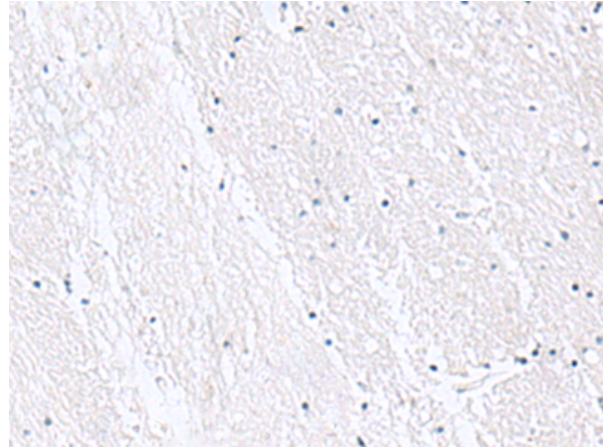
**Constituents:** PBS (without Mg<sup>2+</sup> and Ca<sup>2+</sup>), pH 7.4, 150 mM NaCl, 0.05% Sodium Azide and 40% glycerol

**Research Areas:** Neuroscience

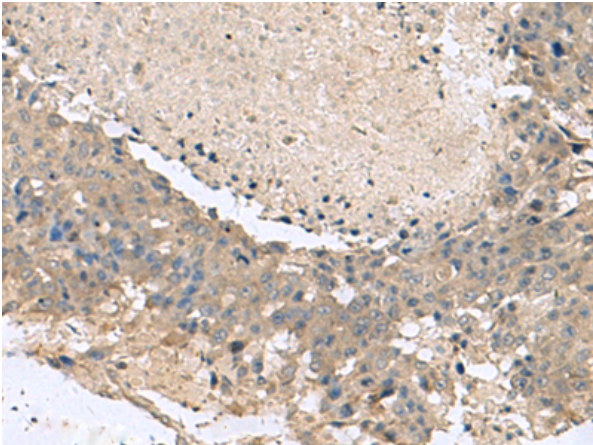
**Storage & Shipping:** Store at -20°C. Avoid repeated freezing and thawing



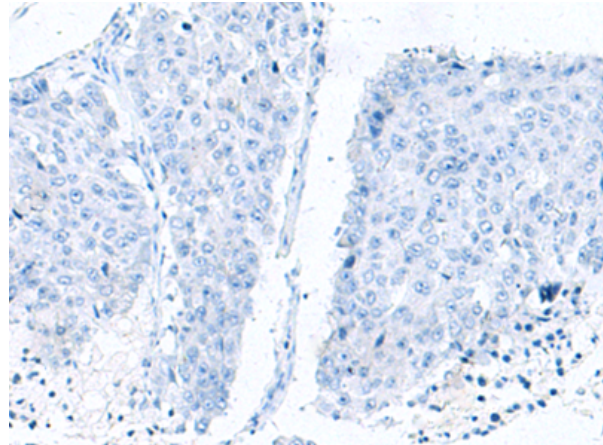
Immunohistochemistry analysis of paraffin embedded Human brain tissue using 216058(KCTD7 Antibody) at a dilution of 1/55(Cytoplasm).



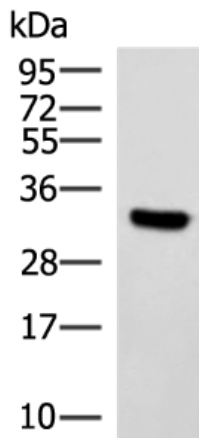
In comparison with the IHC on the left, the same paraffin-embedded Human brain tissue is first treated with the synthetic peptide and then with 216058(Anti-KCTD7 Antibody) at dilution 1/55.



The image on the left is immunohistochemistry of paraffin-embedded Human liver cancer tissue using 216058(Anti-KCTD7 Antibody) at a dilution of 1/55.



In comparison with the IHC on the left, the same paraffin-embedded Human liver cancer tissue is first treated with synthetic peptide and then with D164339(Anti-KCTD7 Antibody) at dilution 1/55.



Gel: 12%SDS-PAGE, Lysate: 40 µg;  
Lane: Hela cell lysate;  
Primary antibody: 216058(KCTD7 Antibody) at dilution 1/1200;  
Secondary antibody: HRP-conjugated Goat anti rabbit IgG at 1/5000 dilution;  
Exposure time: 1 minute



# Product Description

Pioneering GTPase and Oncogene Product Development since 2010

---