

## KCNK15 RABBIT PAB

**Cat.#:** S216050

**Product Name:** Anti-KCNK15 Rabbit Polyclonal Antibody

**Synonyms:** KT3.3; TASK5; KCNK11; KCNK14; TASK-5; K2p15.1; dJ781B1.1

**UNIPROT ID:** Q9H427 (Gene Accession - NP\_071753 )

**Background:** This gene encodes one of the members of the superfamily of potassium channel proteins containing two pore-forming P domains. The product of this gene has not been shown to be a functional channel, however, it may require other non-pore-forming proteins for activity.

**Immunogen:** Synthetic peptide of human KCNK15

**Applications:** ELISA, WB, IHC

**Recommended Dilutions:** IHC: 25-100;WB: 1000-5000;ELISA: 5000-10000

**Host Species:** Rabbit

**Clonality:** Rabbit Polyclonal

**Isotype:** Immunogen-specific rabbit IgG

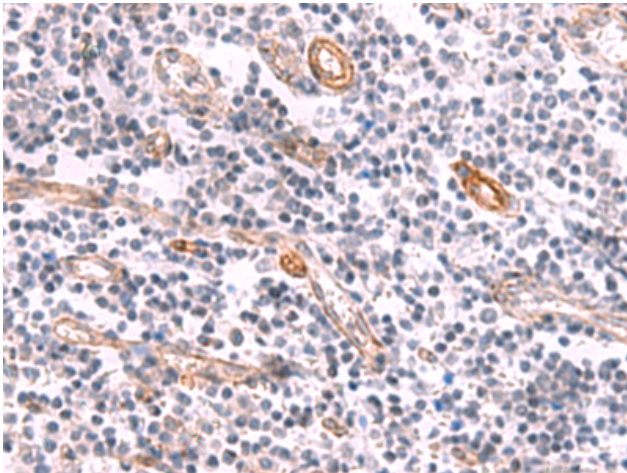
**Purification:** Antigen affinity purification

**Species Reactivity:** Human

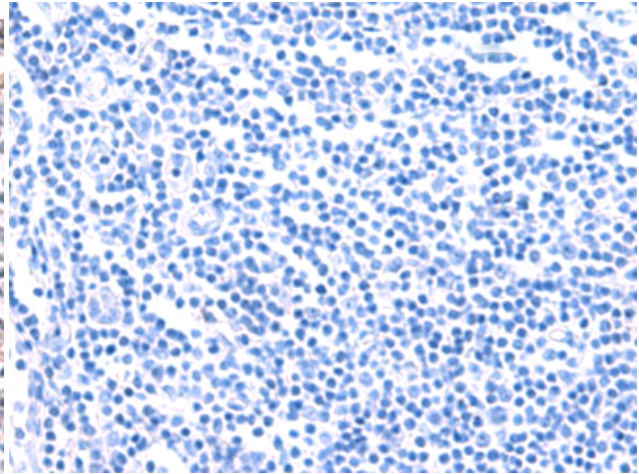
**Constituents:** PBS (without Mg<sup>2+</sup> and Ca<sup>2+</sup>), pH 7.4, 150 mM NaCl, 0.05% Sodium Azide and 40% glycerol

**Research Areas:** Neuroscience

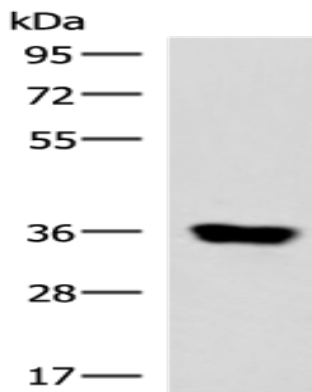
**Storage & Shipping:** Store at -20°C. Avoid repeated freezing and thawing



Immunohistochemistry analysis of paraffin embedded Human tonsil tissue using 216050(KCNK15 Antibody) at a dilution of 1/45(Cytoplasm).



In comparison with the IHC on the left, the same paraffin-embedded Human tonsil tissue is first treated with the synthetic peptide and then with 216050(Anti-KCNK15 Antibody) at dilution 1/45.



Gel: 8%SDS-PAGE, Lysate: 40  $\mu$ g;  
Lane: Human muscle tissue lysate;  
Primary antibody: 216050(KCNK15 Antibody) at dilution 1/1000;  
Secondary antibody: HRP-conjugated Goat anti rabbit IgG at 1/5000 dilution;  
Exposure time: 40 seconds