

KBTBD8 RABBIT PAB

Cat.#: S219462

Product Name: Anti-KBTBD8 Rabbit Polyclonal Antibody

Synonyms: TAKRP; TA-KRP

UNIPROT ID: Q8NFY9 (Gene Accession - BC117487)

Background: Substrate-specific adapter of a BCR (BTB-CUL3-RBX1) E3 ubiquitin ligase complex that acts as a regulator of neural crest specification. The BCR(KBTBD8) complex acts by mediating monoubiquitination of NOLC1 and TCOF1: monoubiquitination promotes the formation of a NOLC1-TCOF1 complex that acts as a platform to connect RNA polymerase I with enzymes responsible for ribosomal processing and modification, leading to remodel the translational program of differentiating cells in favor of neural crest specification.

Immunogen: Fusion protein of human KBTBD8

Applications: ELISA, WB, IHC

Recommended Dilutions: IHC: 150-300;WB: 1000-5000;ELISA: 5000-10000

Host Species: Rabbit

Clonality: Rabbit Polyclonal

Isotype: Immunogen-specific rabbit IgG

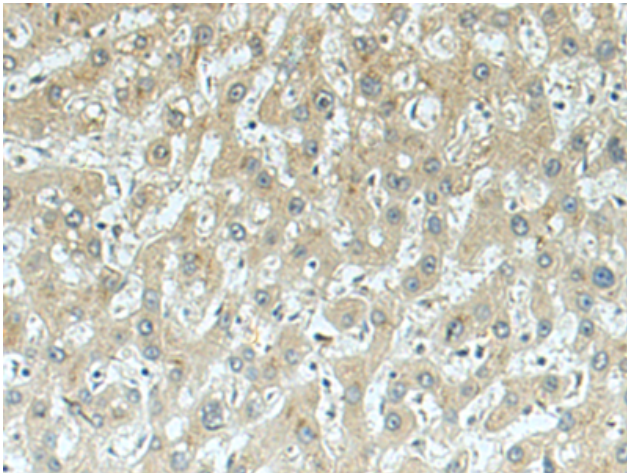
Purification: Antigen affinity purification

Species Reactivity: Human, Mouse, Rat

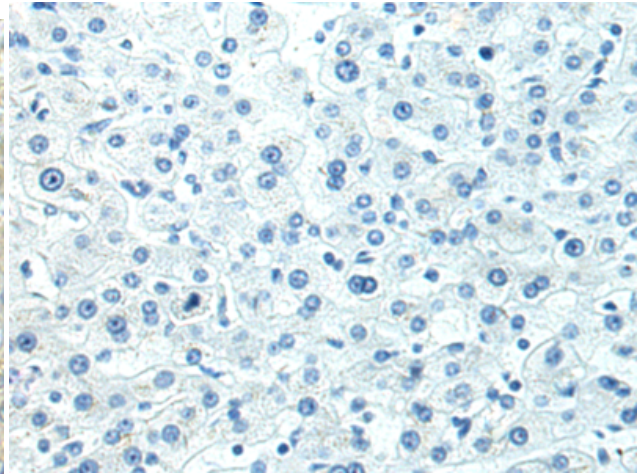
Constituents: PBS (without Mg²⁺ and Ca²⁺), pH 7.4, 150 mM NaCl, 0.05% Sodium Azide and 40% glycerol

Research Areas: Cell Biology

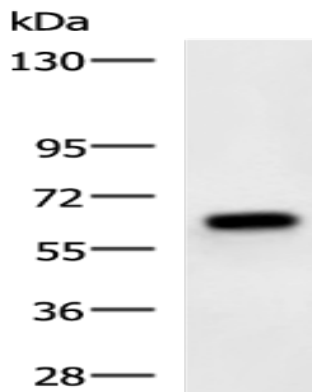
Storage & Shipping: Store at -20°C. Avoid repeated freezing and thawing



Immunohistochemistry analysis of paraffin embedded Human liver cancer tissue using 219462(KBTBD8 Antibody) at a dilution of 1/160(Cytoplasm).



In comparison with the IHC on the left, the same paraffin-embedded Human liver cancer tissue is first treated with the fusion protein and then with 219462(Anti-KBTBD8 Antibody) at dilution 1/160.



Gel: 6%SDS-PAGE, Lysate: 40 μ g;
Lane: NIH/3T3 cell lysate;
Primary antibody: 219462(KBTBD8 Antibody) at dilution 1/1000;
Secondary antibody: HRP-conjugated Goat anti rabbit IgG at 1/5000 dilution;
Exposure time: 5 seconds