

## KAPPA ACTIN RABBIT PAB

**Cat.#:** N225428

**Product Name:** Anti-kappa Actin Rabbit pAb

**Synonyms:** ACT

**UNIPROT ID:** Q562R1

**Background:** Actins are highly conserved proteins that are involved in various types of cell motility and are ubiquitously expressed in all eukaryotic cells.

**Immunogen:** The antiserum was produced against synthesized peptide derived from human ACTBL2. AA range:81-130

**Applications:** WB,ELISA

**Recommended Dilutions:** WB: 1/500-1/1000 ELISA: 1/10000

**Host Species:** Rabbit

**Clonality:** Rabbit Polyclonal

**Clone ID:** -

**MW:** Calculated MW: 42 kDa; Observed MW: 42 kDa

**Isotype:** IgG

**Purification:** Affinity Chromatography

**Species Reactivity:** Human,Mouse

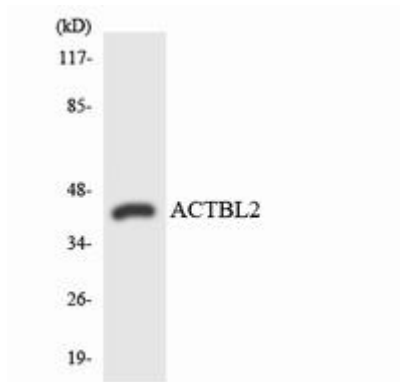
**Conjugation:** Unconjugated

**Modification:** Unmodified

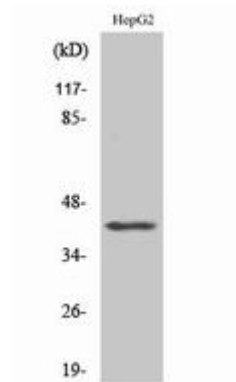
**Constituents:** PBS (without Mg<sup>2+</sup> and Ca<sup>2+</sup>), pH 7.3 containing 50% glycerol, 0.5% BSA and 0.02% sodium azide

**Research Areas:** Tags & Cell Markers

**Storage & Shipping:** Store at -20°C. Avoid repeated freezing and thawing



Western blot analysis of kappa Actin in the HUVEC lysates using ACTBL2 antibody.



Western blot analysis of kappa Actin in various lysates using kappa Actin antibody.