

## KAP1 RABBIT MAB

**Cat.#:** N262438

**Product Name:** Anti-KAP1 Rabbit Monoclonal Antibody

**Synonyms:** TRIM28; KAP1; RNF96; TIF1B; Transcription intermediary factor 1-beta; TIF1-beta; E3 SUMO-protein ligase TRIM28; KRAB-associated protein 1; KAP-1; KRAB-interacting protein 1; KRIP-1; Nuclear corepressor KAP-1; RING finger protein 96; Tripart

**UNIPROT ID:** Q13263

**Background:** Nuclear corepressor for KRAB domain-containing zinc finger proteins (KRAB-ZFPs). Mediates gene silencing by recruiting CHD3, a subunit of the nucleosome remodeling and deacetylation (NuRD) complex, and SETDB1 (which specifically methylates histone H3 at 'Lys-9' (H3K9me)) to the promoter regions of KRAB target genes.

**Immunogen:** A synthetic peptide of human KAP1

**Applications:** WB,IHC-F,IHC-P,ICC/IF

**Recommended Dilutions:** WB: 1/500-1/1000 IHC: 1/50-1/100 IF: 1/50-1/200

**Host Species:** Rabbit

**Clonality:** Rabbit Monoclonal

**Clone ID:** R07-5E6

**MW:** Calculated MW: 89 kDa; Observed MW: 100 kDa

**Isotype:** IgG

**Purification:** Affinity Purified

**Species Reactivity:** Human,Mouse,Rat

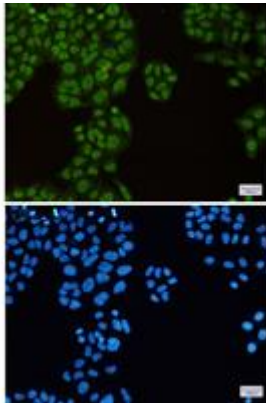
**Conjugation:** Unconjugated

**Modification:** Unmodified

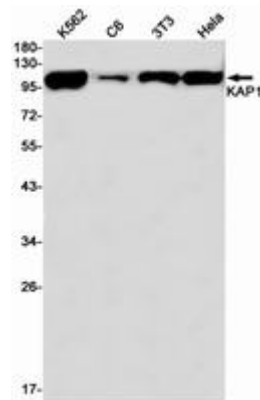
**Constituents:** PBS (without Mg<sup>2+</sup> and Ca<sup>2+</sup>), pH 7.3 containing 50% glycerol, 0.5% BSA and 0.02% sodium azide

**Research Areas:** Epigenetics and Nuclear Signaling

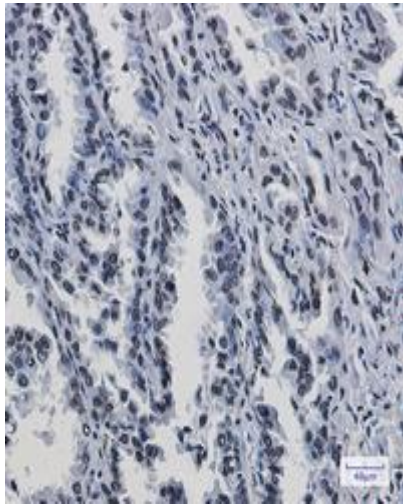
**Storage & Shipping:** Store at -20°C. Avoid repeated freezing and thawing



Immunocytochemistry analysis of KAP1 (green) in HeLa using KAP1 antibody, and DAPI (blue)



Western blot analysis of KAP1 in K562, C6, 3T3, HeLa lysates using KAP1 antibody.



Immunohistochemistry analysis of paraffin-embedded Human lung cancer using KAP1 antibody. High-pressure and temperature Sodium Citrate pH 6.0 was used for antigen retrieval.