

KANSL1L RABBIT PAB

Cat.#: S222272

Product Name: Anti-KANSL1L Rabbit Polyclonal Antibody

Synonyms: MSL1v2; C2orf67

UNIPROT ID: A0AUZ9 (Gene Accession - NP_689732)

Background: The function of this protein remains unknown.

Immunogen: Synthetic peptide of human KANSL1L

Applications: ELISA, IHC

Recommended Dilutions: IHC: 25-100; ELISA: 5000-10000

Host Species: Rabbit

Clonality: Rabbit Polyclonal

Isotype: Immunogen-specific rabbit IgG

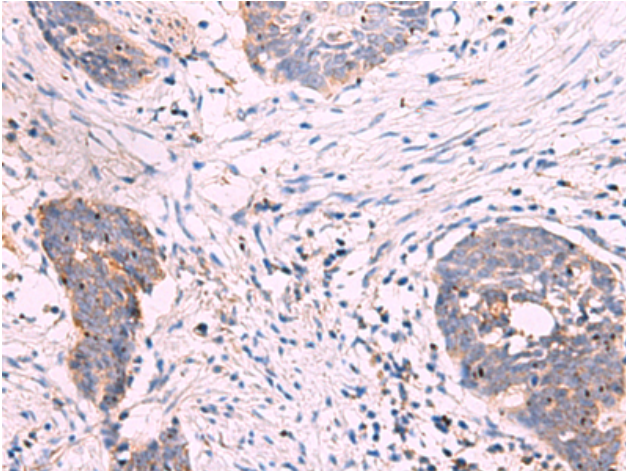
Purification: Antigen affinity purification

Species Reactivity: Human

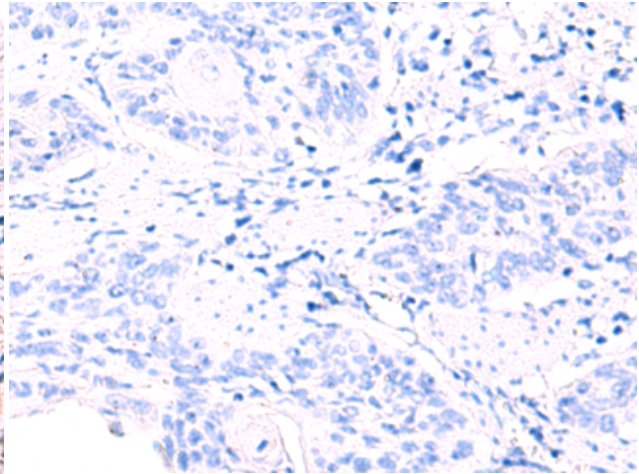
Constituents: PBS (without Mg²⁺ and Ca²⁺), pH 7.4, 150 mM NaCl, 0.05% Sodium Azide and 40% glycerol

Research Areas: Epigenetics and Nuclear Signaling

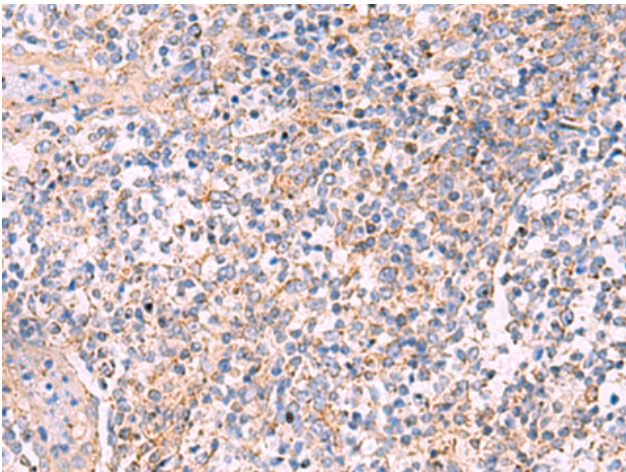
Storage & Shipping: Store at -20°C. Avoid repeated freezing and thawing



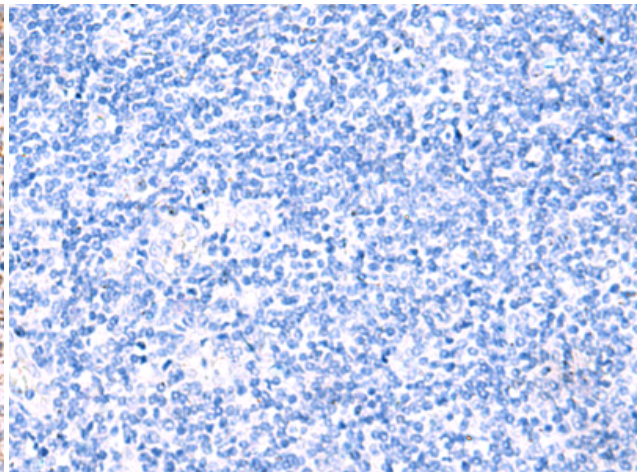
Immunohistochemistry analysis of paraffin embedded Human esophagus cancer tissue using 222272(KANSLIL Antibody) at a dilution of 1/30(Cytoplasm).



In comparison with the IHC on the left, the same paraffin-embedded Human esophagus cancer tissue is first treated with the synthetic peptide and then with 222272(Anti-KANSLIL Antibody) at dilution 1/30.



The image on the left is immunohistochemistry of paraffin-embedded Human tonsil tissue using 222272(Anti-KANSLIL Antibody) at a dilution of 1/30.



In comparison with the IHC on the left, the same paraffin-embedded Human tonsil tissue is first treated with synthetic peptide and then with D264312(Anti-KANSLIL Antibody) at dilution 1/30.