

## KANSL1L RABBIT PAB

**Cat.#:** S219177

**Product Name:** Anti-KANSL1L Rabbit Polyclonal Antibody

**Synonyms:** MSL1v2; C2orf67

**UNIPROT ID:** A0AUZ9 (Gene Accession - BC032837 )

**Background:** The function of this protein remains unknown.

**Immunogen:** Fusion protein of human KANSL1L

**Applications:** ELISA, IHC

**Recommended Dilutions:** IHC: 100-300; ELISA: 5000-10000

**Host Species:** Rabbit

**Clonality:** Rabbit Polyclonal

**Isotype:** Immunogen-specific rabbit IgG

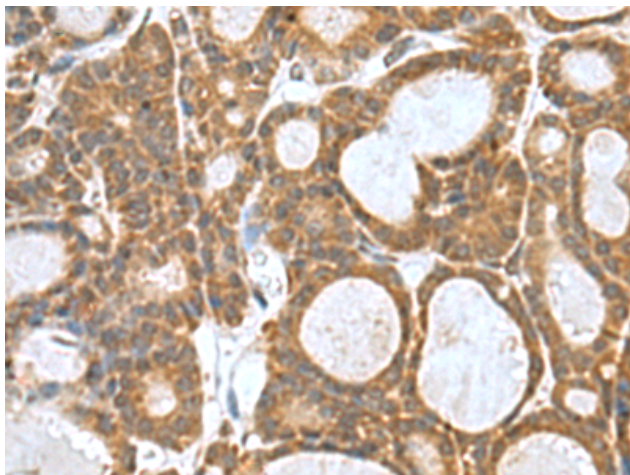
**Purification:** Antigen affinity purification

**Species Reactivity:** Human, Mouse

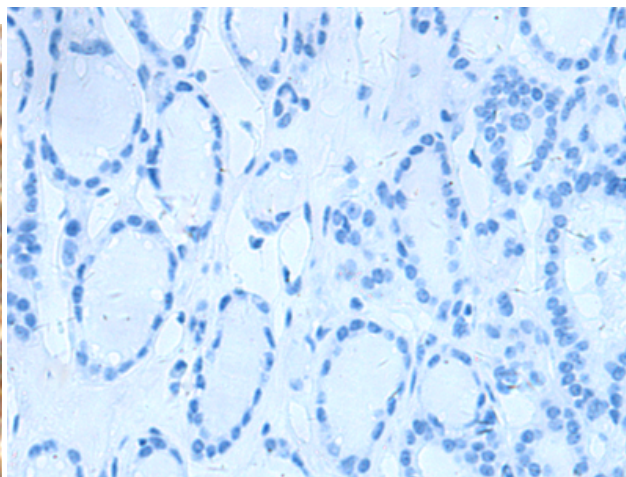
**Constituents:** PBS (without Mg<sup>2+</sup> and Ca<sup>2+</sup>), pH 7.4, 150 mM NaCl, 0.05% Sodium Azide and 40% glycerol

**Research Areas:** Epigenetics and Nuclear Signaling

**Storage & Shipping:** Store at -20°C. Avoid repeated freezing and thawing



Immunohistochemistry analysis of paraffin embedded Human thyroid cancer tissue using 219177 (KANSL1L Antibody) at a dilution of 1/80 (Cytoplasm).



In comparison with the IHC on the left, the same paraffin-embedded Human thyroid cancer tissue is first treated with the fusion protein and then with 219177 (Anti-KANSL1L Antibody) at dilution 1/80.