

KANK3 RABBIT PAB

Cat.#: S222268

Product Name: Anti-KANK3 Rabbit Polyclonal Antibody

Synonyms: ANKRD47

UNIPROT ID: Q6NY19 (Gene Accession - NP_940873)

Background: May be involved in the control of cytoskeleton formation by regulating actin polymerization.

Immunogen: Synthetic peptide of human KANK3

Applications: ELISA, IHC

Recommended Dilutions: IHC: 20-100; ELISA: 5000-10000

Host Species: Rabbit

Clonality: Rabbit Polyclonal

Isotype: Immunogen-specific rabbit IgG

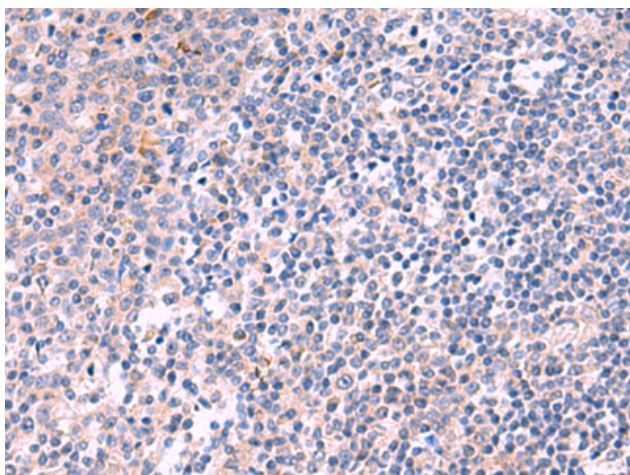
Purification: Antigen affinity purification

Species Reactivity: Human, Mouse

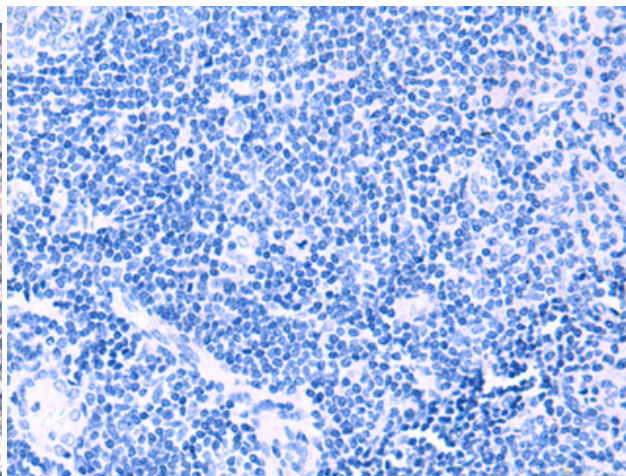
Constituents: PBS (without Mg²⁺ and Ca²⁺), pH 7.4, 150 mM NaCl, 0.05% Sodium Azide and 40% glycerol

Research Areas: Signal Transduction

Storage & Shipping: Store at -20°C. Avoid repeated freezing and thawing



Immunohistochemistry analysis of paraffin embedded Human tonsil tissue using 222268(KANK3 Antibody) at a dilution of 1/35(Cytoplasm).



In comparison with the IHC on the left, the same paraffin-embedded Human tonsil tissue is first treated with the synthetic peptide and then with 222268(Anti-KANK3 Antibody) at dilution 1/35.