

JAM3 RABBIT PAB

Cat.#: S222263

Product Name: Anti-JAM3 Rabbit Polyclonal Antibody

Synonyms: JAMC; JAM-2; JAM-3; JAM-C

UNIPROT ID: Q9BX67 (Gene Accession - NP_116190)

Background: Tight junctions represent one mode of cell-to-cell adhesion in epithelial or endothelial cell sheets, forming continuous seals around cells and serving as a physical barrier to prevent solutes and water from passing freely through the paracellular space. The protein encoded by this immunoglobulin superfamily gene member is localized in the tight junctions between high endothelial cells. Unlike other proteins in this family, this protein is unable to adhere to leukocyte cell lines and only forms weak homotypic interactions. The encoded protein is a member of the junctional adhesion molecule protein family and acts as a receptor for another member of this family. A mutation in an intron of this gene is associated with hemorrhagic destruction of the brain, subependymal calcification, and congenital cataracts. Alternative splicing results in multiple transcript variants.

Immunogen: Synthetic peptide of human JAM3

Applications: ELISA, WB, IHC

Recommended Dilutions: IHC: 40-200;WB: 500-2000;ELISA: 5000-10000

Host Species: Rabbit

Clonality: Rabbit Polyclonal

Isotype: Immunogen-specific rabbit IgG

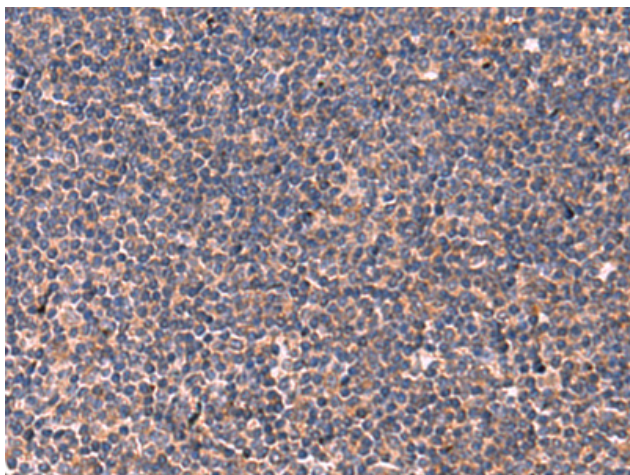
Purification: Antigen affinity purification

Species Reactivity: Human, Mouse

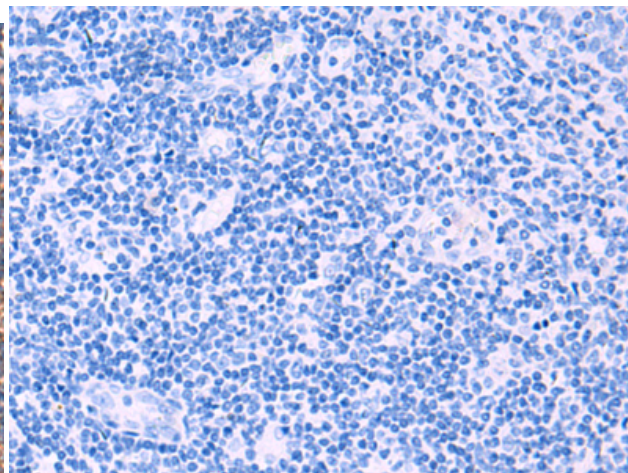
Constituents: PBS (without Mg²⁺ and Ca²⁺), pH 7.4, 150 mM NaCl, 0.05% Sodium Azide and 40% glycerol

Research Areas: Signal Transduction, Cardiovascular, Immunology

Storage & Shipping: Store at -20°C. Avoid repeated freezing and thawing



Immunohistochemistry analysis of paraffin embedded Human tonsil tissue using 222263(JAM3 Antibody) at a dilution of 1/45(Cytoplasm).



In comparison with the IHC on the left, the same paraffin-embedded Human tonsil tissue is first treated with the synthetic peptide and then with 222263(Anti-JAM3 Antibody) at dilution 1/45.



Gel: 8%SDS-PAGE, Lysate: 40 μ g;
Lane: K562 cell lysate;
Primary antibody: 222263(JAM3 Antibody) at dilution 1/1000;
Secondary antibody: HRP-conjugated Goat anti rabbit IgG at 1/5000 dilution;
Exposure time: 7 minutes