

## JAK1 RABBIT PAB

**Cat.#:** S221451

**Product Name:** Anti-JAK1 Rabbit Polyclonal Antibody

**Synonyms:** JTK3; JAK1A; JAK1B

**UNIPROT ID:** P23458 (Gene Accession - NP\_002218 )

**Background:** Janus kinase 1 (JAK1), is a member of a new class of protein-tyrosine kinases (PTK) characterized by the presence of a second phosphotransferase-related domain immediately N-terminal to the PTK domain. The second phosphotransferase domain bears all the hallmarks of a protein kinase, although its structure differs significantly from that of the PTK and threonine/serine kinase family members. JAK1 is a large, widely expressed membrane-associated phosphoprotein. JAK1 is involved in the interferon- $\alpha$ / $\beta$  and - $\gamma$  signal transduction pathways. The reciprocal interdependence between JAK1 and TYK2 activities in the interferon- $\alpha$  pathway, and between JAK1 and JAK2 in the interferon- $\gamma$  pathway, may reflect a requirement for these kinases in the correct assembly of interferon receptor complexes. These kinases couple cytokine ligand binding to tyrosine phosphorylation of various known signaling proteins and of a unique family of transcription factors termed the signal transducers and activators of transcription, or STATs.

**Immunogen:** Synthetic peptide of human JAK1

**Applications:** ELISA, IHC

**Recommended Dilutions:** IHC: 25-100; ELISA: 500-1000

**Host Species:** Rabbit

**Clonality:** Rabbit Polyclonal

**Isotype:** Immunogen-specific rabbit IgG

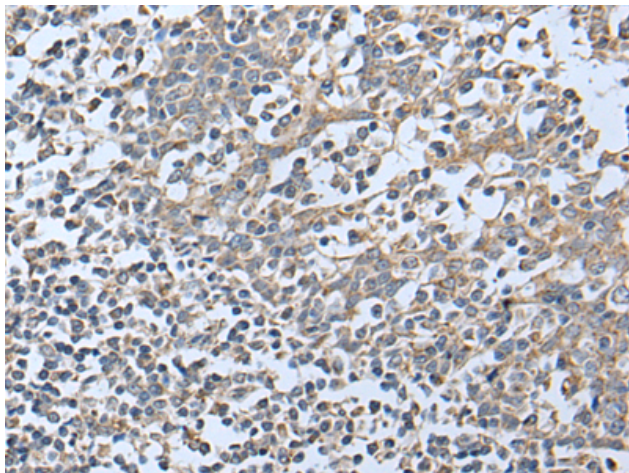
**Purification:** Antigen affinity purification

**Species Reactivity:** Human, Mouse

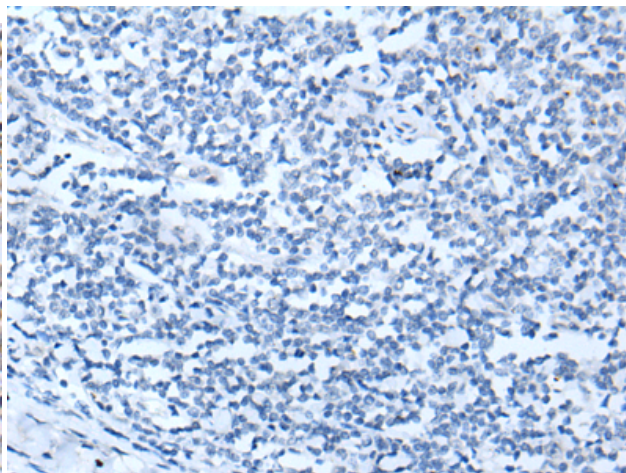
**Constituents:** PBS (without  $Mg^{2+}$  and  $Ca^{2+}$ ), pH 7.4, 150 mM NaCl, 0.05% Sodium Azide and 40% glycerol

**Research Areas:** Signal Transduction, Epigenetics and Nuclear Signaling, Cancer

**Storage & Shipping:** Store at  $-20^{\circ}C$ . Avoid repeated freezing and thawing



Immunohistochemistry analysis of paraffin embedded Human tonsil tissue using 221451(JAK1 Antibody) at a dilution of 1/25(Cytoplasm).



In comparison with the IHC on the left, the same paraffin-embedded Human tonsil tissue is first treated with the synthetic peptide and then with 221451(Anti-JAK1 Antibody) at dilution 1/25.