

## IZUMO1R RABBIT PAB

**Cat.#:** S222045

**Product Name:** Anti-IZUMO1R Rabbit Polyclonal Antibody

**Synonyms:** JUNO; FOLR4; Folbp3

**UNIPROT ID:** A6ND01 (Gene Accession - NP\_001186135 )

**Background:** Receptor for IZUMO1 present at the cell surface of oocytes (oolemma), which is essential for species-specific gamete recognition and fertilization. The IZUMO1:IZUMO1R/JUNO interaction is a necessary adhesion event between sperm and egg that is required for fertilization but is not sufficient for cell fusion. The ligand-receptor interaction probably does not act as a membrane 'fusogen'. Does not bind folate.

**Immunogen:** Synthetic peptide of human IZUMO1R

**Applications:** ELISA, IHC

**Recommended Dilutions:** IHC: 25-100; ELISA: 5000-10000

**Host Species:** Rabbit

**Clonality:** Rabbit Polyclonal

**Isotype:** Immunogen-specific rabbit IgG

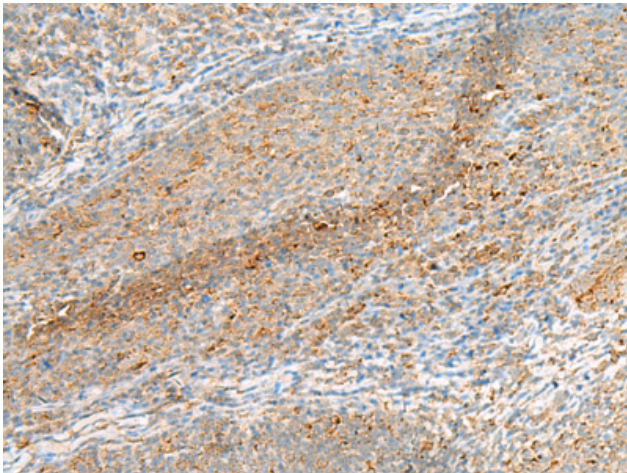
**Purification:** Antigen affinity purification

**Species Reactivity:** Human

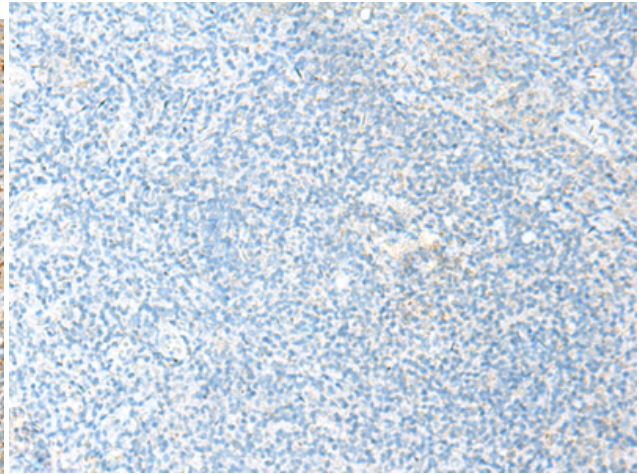
**Constituents:** PBS (without Mg<sup>2+</sup> and Ca<sup>2+</sup>), pH 7.4, 150 mM NaCl, 0.05% Sodium Azide and 40% glycerol

**Research Areas:** Signal Transduction

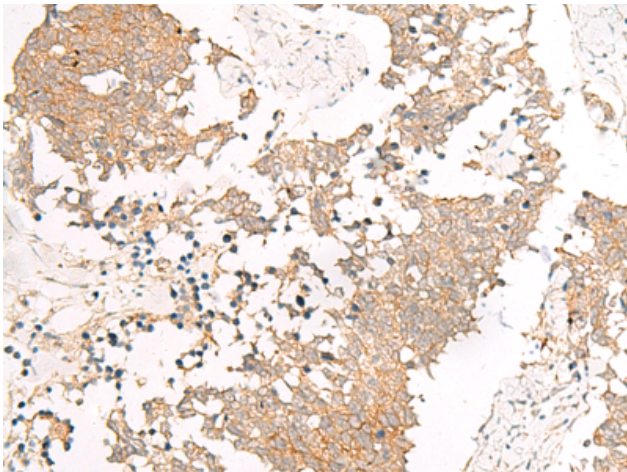
**Storage & Shipping:** Store at -20°C. Avoid repeated freezing and thawing



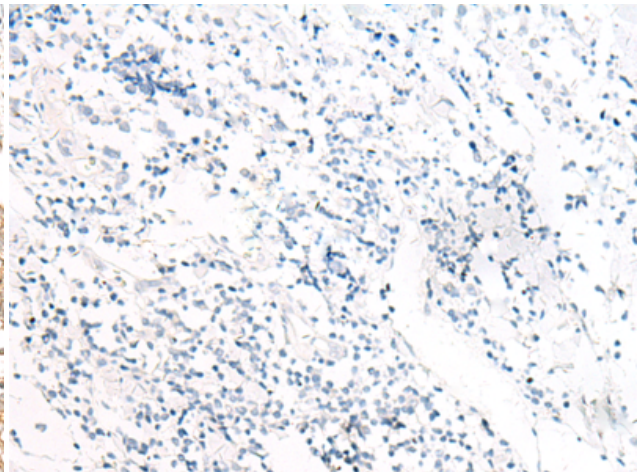
Immunohistochemistry analysis of paraffin embedded Human tonsil tissue using 222045 (IZUMO1R Antibody) at a dilution of 1/40 (Cell membrane).



In comparison with the IHC on the left, the same paraffin-embedded Human tonsil tissue is first treated with the synthetic peptide and then with 222045 (Anti-IZUMO1R Antibody) at dilution 1/40.



The image on the left is immunohistochemistry of paraffin-embedded Human lung cancer tissue using 222045 (Anti-IZUMO1R Antibody) at a dilution of 1/40.



In comparison with the IHC on the left, the same paraffin-embedded Human lung cancer tissue is first treated with synthetic peptide and then with D263930 (Anti-IZUMO1R Antibody) at dilution 1/40.