

ITSN2 RABBIT PAB

Cat.#: S222235

Product Name: Anti-ITSN2 Rabbit Polyclonal Antibody

Synonyms: SWA; SWAP; SH3D1B; SH3P18; PRO2015

UNIPROT ID: Q9NZM3 (Gene Accession - NP_006268)

Background: This gene encodes a cytoplasmic protein which contains SH3 domains. This protein is a member of a family of proteins involved in clathrin-mediated endocytosis. Intersectin 2 is thought to regulate the formation of clathrin-coated vesicles and also may function in the induction of T cell antigen receptor (TCR) endocytosis.

Immunogen: Synthetic peptide of human ITSN2

Applications: ELISA, WB, IHC

Recommended Dilutions: IHC: 25-100;WB: 200-1000;ELISA: 5000-10000

Host Species: Rabbit

Clonality: Rabbit Polyclonal

Isotype: Immunogen-specific rabbit IgG

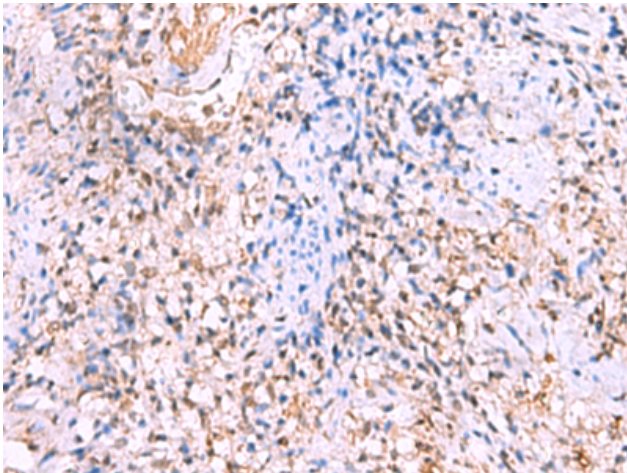
Purification: Antigen affinity purification

Species Reactivity: Human, Mouse

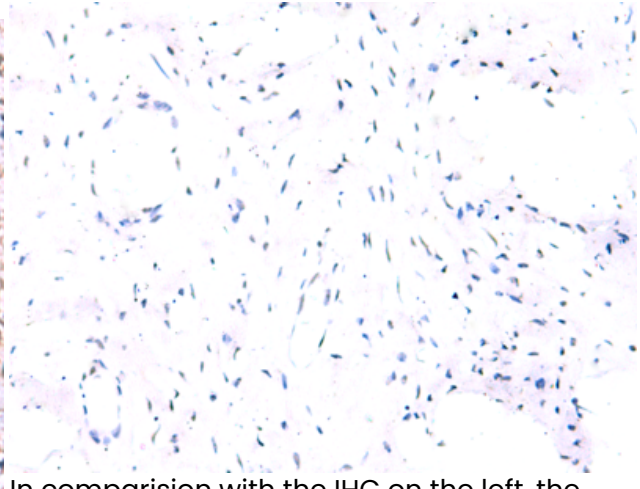
Constituents: PBS (without Mg²⁺ and Ca²⁺), pH 7.4, 150 mM NaCl, 0.05% Sodium Azide and 40% glycerol

Research Areas: Signal Transduction

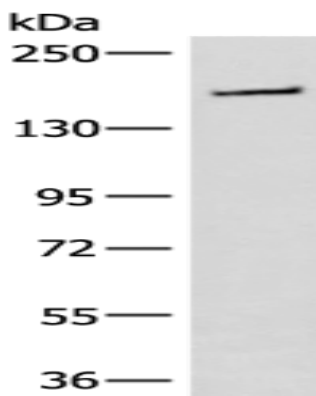
Storage & Shipping: Store at -20°C. Avoid repeated freezing and thawing



Immunohistochemistry analysis of paraffin embedded Human cervical cancer tissue using 222235(ITSN2 Antibody) at a dilution of 1/30(Cytoplasm).



In comparison with the IHC on the left, the same paraffin-embedded Human cervical cancer tissue is first treated with the synthetic peptide and then with 222235(Anti-ITSN2 Antibody) at dilution 1/30.



Gel: 6%SDS-PAGE, Lysate: 40 μ g;
Lane: HeLa cell lysate;
Primary antibody: 222235(ITSN2 Antibody) at dilution 1/250;
Secondary antibody: Goat anti rabbit IgG at 1/8000 dilution;
Exposure time: 90 seconds