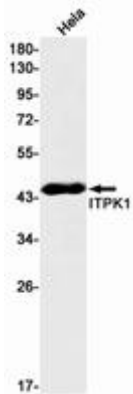


ITPK1 RABBIT MAB**Cat.#:** N262428**Product Name:** Anti-ITPK1 Rabbit Monoclonal Antibody**Synonyms:** ITRPK1**UNIPROT ID:** Q13572

Background: Kinase that can phosphorylate various inositol polyphosphate such as Ins(3,4,5,6)P₄ or Ins(1,3,4)P₃. Phosphorylates Ins(3,4,5,6)P₄ at position 1 to form Ins(1,3,4,5,6)P₅. This reaction is thought to have regulatory importance, since Ins(3,4,5,6)P₄ is an inhibitor of plasma membrane Ca²⁺-activated Cl⁻ channels, while Ins(1,3,4,5,6)P₅ is not. Also phosphorylates Ins(1,3,4)P₃ on O-5 and O-6 to form Ins(1,3,4,6)P₄, an essential molecule in the hexakisphosphate (InsP₆) pathway. Also acts as an inositol polyphosphate phosphatase that dephosphorylates Ins(1,3,4,5)P₄ and Ins(1,3,4,6)P₄ to Ins(1,3,4)P₃, and Ins(1,3,4,5,6)P₅ to Ins(3,4,5,6)P₄. May also act as an isomerase that interconverts the inositol tetrakisphosphate isomers Ins(1,3,4,5)P₄ and Ins(1,3,4,6)P₄ in the presence of ADP and magnesium. Probably acts as the rate-limiting enzyme of the InsP₆ pathway. Modifies TNF- α -induced apoptosis by interfering with the activation of TNFRSF1A-associated death domain.

Immunogen: A synthetic peptide of human ITPK1**Applications:** WB,IP**Recommended Dilutions:** WB: 1/500-1/1000 IP: 1/20**Host Species:** Rabbit**Clonality:** Rabbit Monoclonal**Clone ID:** R01-7C2**MW:** Calculated MW: 46 kDa; Observed MW: 46 kDa**Isotype:** IgG**Purification:** Affinity Purified**Species Reactivity:** Human**Conjugation:** Unconjugated**Modification:** Unmodified**Constituents:** PBS (without Mg²⁺ and Ca²⁺), pH 7.3 containing 50% glycerol, 0.5% BSA and 0.02% sodium azide**Research Areas:** Signal Transduction**Storage & Shipping:** Store at -20°C. Avoid repeated freezing and thawing



Western blot analysis of ITPK1 in HeLa lysates using ITPK1 antibody.