

## ITGB3 RABBIT PAB

**Cat.#:** S216586

**Product Name:** Anti-ITGB3 Rabbit Polyclonal Antibody

**Synonyms:** GT; CD61; GP3A; BDPLT2; GPIIIa; BDPLT16

**UNIPROT ID:** P05106 (Gene Accession - BC127666 )

**Background:** The ITGB3 protein product is the integrin beta chain beta 3. Integrins are integral cell-surface proteins composed of an alpha chain and a beta chain. A given chain may combine with multiple partners resulting in different integrins. Integrin beta 3 is found along with the alpha IIb chain in platelets. Integrins are known to participate in cell adhesion as well as cell-surface mediated signalling.

**Immunogen:** Fusion protein of human ITGB3

**Applications:** ELISA, WB, IHC

**Recommended Dilutions:** IHC: 100-300;WB: 500-2000;ELISA: 5000-10000

**Host Species:** Rabbit

**Clonality:** Rabbit Polyclonal

**Isotype:** Immunogen-specific rabbit IgG

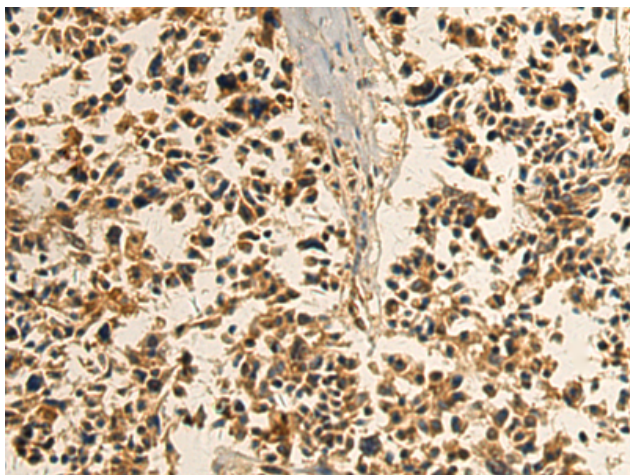
**Purification:** Antigen affinity purification

**Species Reactivity:** Human, Mouse, Rat

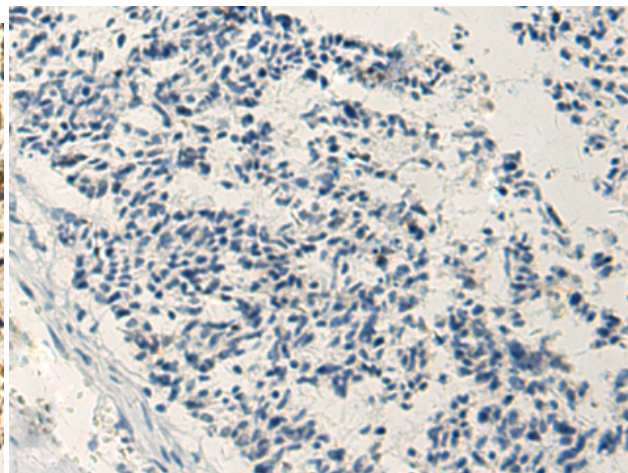
**Constituents:** PBS (without Mg<sup>2+</sup> and Ca<sup>2+</sup>), pH 7.4, 150 mM NaCl, 0.05% Sodium Azide and 40% glycerol

**Research Areas:** Signal Transduction, Cardiovascular

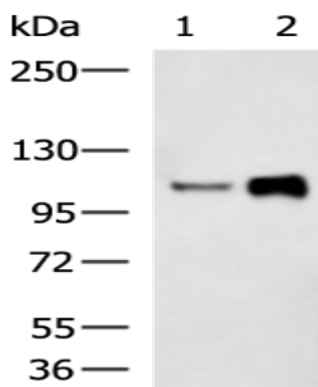
**Storage & Shipping:** Store at -20°C. Avoid repeated freezing and thawing



Immunohistochemistry analysis of paraffin embedded Human ovarian cancer tissue using 216586(ITGB3 Antibody) at a dilution of 1/110(Cytoplasm).



In comparison with the IHC on the left, the same paraffin-embedded Human ovarian cancer tissue is first treated with the fusion protein and then with 216586(Anti-ITGB3 Antibody) at dilution 1/110.



Gel: 6%SDS-PAGE, Lysate: 40 µg;  
 Lane 1-2: HUVEC cell, Human placenta tissue lysates;  
 Primary antibody: 216586(ITGB3 Antibody) at dilution 1/500;  
 Secondary antibody: HRP-conjugated Goat anti rabbit IgG at 1/5000 dilution;  
 Exposure time: 40 seconds