

ITGB2 RABBIT PAB

Cat.#: S217545

Product Name: Anti-ITGB2 Rabbit Polyclonal Antibody

Synonyms: LAD; CD18; MF17; MF17; LCAMB; LFA-1; MAC-1

UNIPROT ID: P05107 (Gene Accession - BC005861)

Background: The product of this gene belongs to the integrin beta chain family of proteins. Integrins are integral cell-surface proteins composed of an alpha chain and a beta chain. This gene encodes the integrin beta chain beta 2. A given chain may combine with multiple partners resulting in different integrins. For example, beta 2 combines with the alpha L chain to form the integrin LFA-1, and combines with the alpha M chain to form the integrin Mac-1. Integrins are known to participate in cell adhesion as well as cell-surface mediated signalling. Defects in this gene are the cause of leukocyte adhesion deficiency type I (LAD1). Two transcript variants encoding the same protein have been identified for this gene.

Immunogen: Fusion protein of human ITGB2

Applications: ELISA, WB, IHC

Recommended Dilutions: IHC: 25-100;WB: 500-2000;ELISA: 2000-5000

Host Species: Rabbit

Clonality: Rabbit Polyclonal

Isotype: Immunogen-specific rabbit IgG

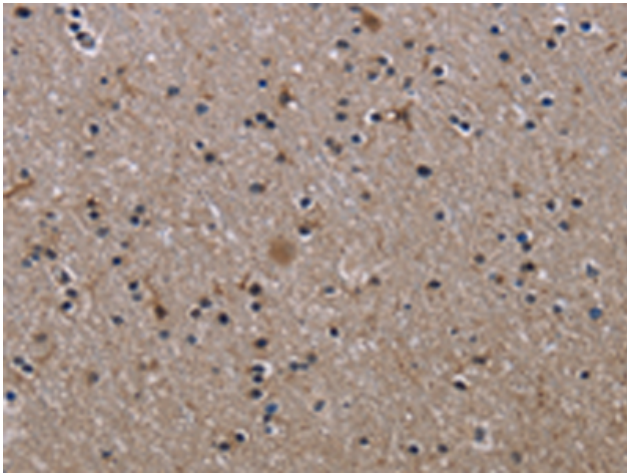
Purification: Antigen affinity purification

Species Reactivity: Human, Mouse

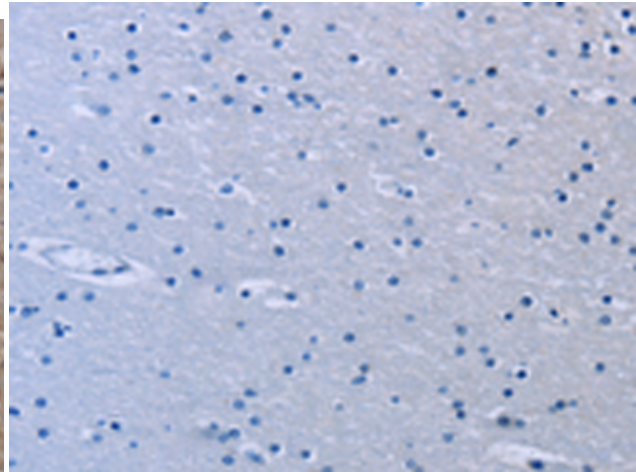
Constituents: PBS (without Mg²⁺ and Ca²⁺), pH 7.4, 150 mM NaCl, 0.05% Sodium Azide and 40% glycerol

Research Areas: Signal Transduction, Immunology, Stem Cells

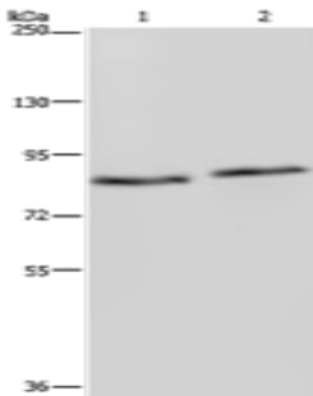
Storage & Shipping: Store at -20°C. Avoid repeated freezing and thawing



Immunohistochemistry analysis of paraffin embedded Human brain tissue using 217545(ITGB2 Antibody) at a dilution of 1/50(Cytoplasm).



In comparison with the IHC on the left, the same paraffin-embedded Human brain tissue is first treated with the fusion protein and then with 217545(Anti-ITGB2 Antibody) at dilution 1/50.



Gel: 6%SDS-PAGE, Lysate: 40 μ g;
Lane 1-2: 293T cells, K562 cells;
Primary antibody: 217545(ITGB2 Antibody) at dilution 1/600;
Secondary antibody: Goat anti rabbit IgG at 1/8000 dilution;
Exposure time: 3 minutes