

ISM1 RABBIT PAB

Cat.#: S222251

Product Name: Anti-ISM1 Rabbit Polyclonal Antibody

Synonyms: ISM; Isthmin; C20orf82; bA149I18.1; dJ1077I2.1

UNIPROT ID: B1AKI9 (Gene Accession - NP_543016)

Background: Acts as an angiogenesis inhibitor.

Immunogen: Synthetic peptide of human ISM1

Applications: ELISA, WB, IHC

Recommended Dilutions: IHC: 40-200;WB: 1000-5000;ELISA: 5000-10000

Host Species: Rabbit

Clonality: Rabbit Polyclonal

Isotype: Immunogen-specific rabbit IgG

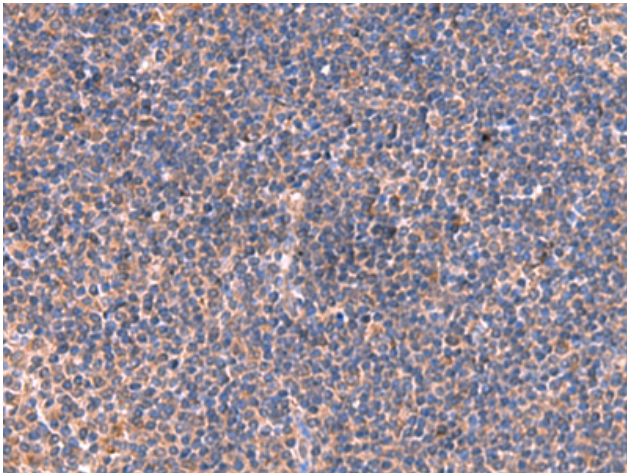
Purification: Antigen affinity purification

Species Reactivity: Human, Mouse

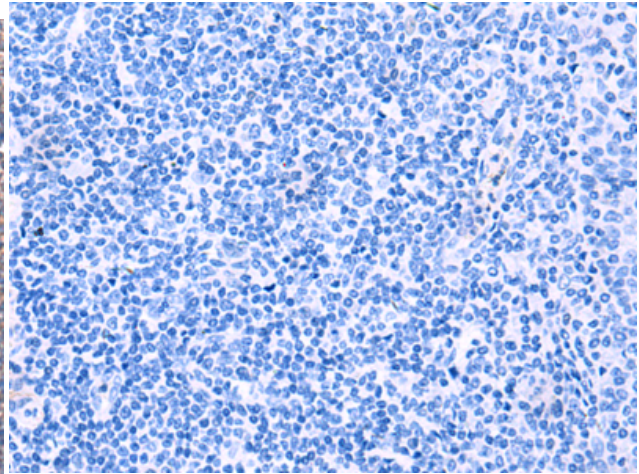
Constituents: PBS (without Mg²⁺ and Ca²⁺), pH 7.4, 150 mM NaCl, 0.05% Sodium Azide and 40% glycerol

Research Areas: Cardiovascular

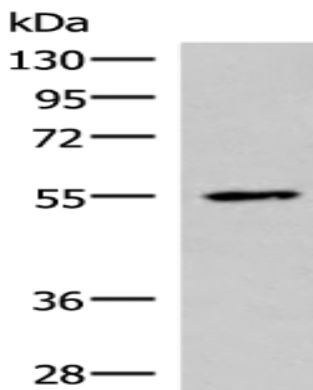
Storage & Shipping: Store at -20°C. Avoid repeated freezing and thawing



Immunohistochemistry analysis of paraffin embedded Human tonsil tissue using 222251(ISM1 Antibody) at a dilution of 1/40(Secreted).



In comparison with the IHC on the left, the same paraffin-embedded Human tonsil tissue is first treated with the synthetic peptide and then with 222251(Anti-ISM1 Antibody) at dilution 1/40.



Gel: 8%SDS-PAGE, Lysate: 40 μ g;
Lane: HepG2 cell lysate;
Primary antibody: 222251(ISM1 Antibody) at dilution 1/1000;
Secondary antibody: HRP-conjugated Goat anti rabbit IgG at 1/5000 dilution;
Exposure time: 20 seconds