

## IRX3 RABBIT PAB

**Cat.#:** S222246

**Product Name:** Anti-IRX3 Rabbit Polyclonal Antibody

**Synonyms:** IRX-1; IRXB1

**UNIPROT ID:** P78415 (Gene Accession - NP\_077312 )

**Background:** IRX3 is a member of the Iroquois homeobox gene family and plays a role in an early step of neural development. Members of this family appear to play multiple roles during pattern formation of vertebrate embryos.

**Immunogen:** Synthetic peptide of human IRX3

**Applications:** ELISA, WB, IHC

**Recommended Dilutions:** IHC: 25-100;WB: 300-1000;ELISA: 5000-10000

**Host Species:** Rabbit

**Clonality:** Rabbit Polyclonal

**Isotype:** Immunogen-specific rabbit IgG

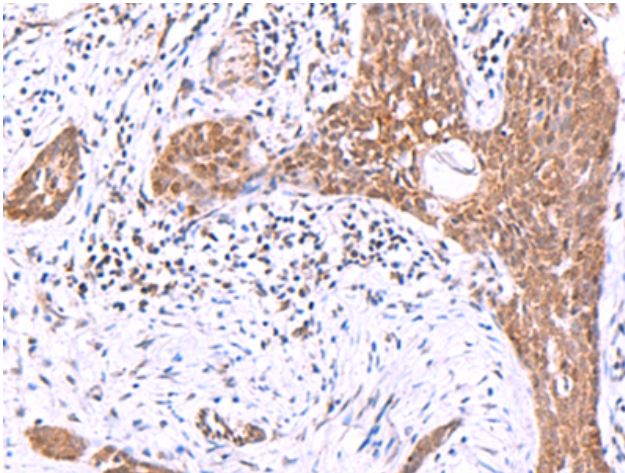
**Purification:** Antigen affinity purification

**Species Reactivity:** Human, Mouse

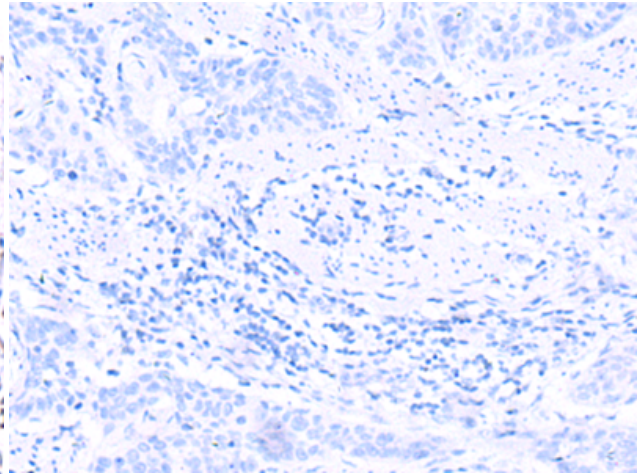
**Constituents:** PBS (without Mg<sup>2+</sup> and Ca<sup>2+</sup>), pH 7.4, 150 mM NaCl, 0.05% Sodium Azide and 40% glycerol

**Research Areas:** Neuroscience

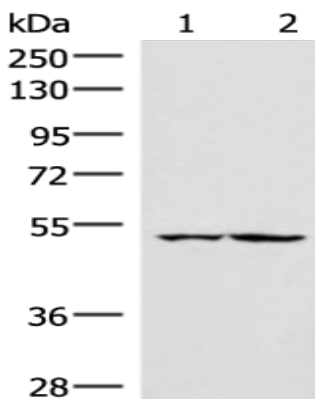
**Storage & Shipping:** Store at -20°C. Avoid repeated freezing and thawing



Immunohistochemistry analysis of paraffin embedded Human esophagus cancer tissue using 222246 (IRX3 Antibody) at a dilution of 1/30 (Nucleus).



In comparison with the IHC on the left, the same paraffin-embedded Human esophagus cancer tissue is first treated with the synthetic peptide and then with 222246 (Anti-IRX3 Antibody) at dilution 1/30.



Gel: 8% SDS-PAGE, Lysate: 40  $\mu$ g;  
 Lane 1-2: HepG2 and Jurkat cell lysates;  
 Primary antibody: 222246 (IRX3 Antibody) at dilution 1/300;  
 Secondary antibody: Goat anti rabbit IgG at 1/8000 dilution;  
 Exposure time: 30 seconds