

IRX2 RABBIT PAB

Cat.#: S222248

Product Name: Anti-IRX2 Rabbit Polyclonal Antibody

Synonyms: IRXA2

UNIPROT ID: Q9BZ11 (Gene Accession - NP_150366)

Background: IRX2 is a member of the Iroquois homeobox gene family. Members of this family appear to play multiple roles during pattern formation of vertebrate embryos.

Immunogen: Synthetic peptide of human IRX2

Applications: ELISA, WB, IHC

Recommended Dilutions: IHC: 30-150;WB: 500-2000;ELISA: 5000-10000

Host Species: Rabbit

Clonality: Rabbit Polyclonal

Isotype: Immunogen-specific rabbit IgG

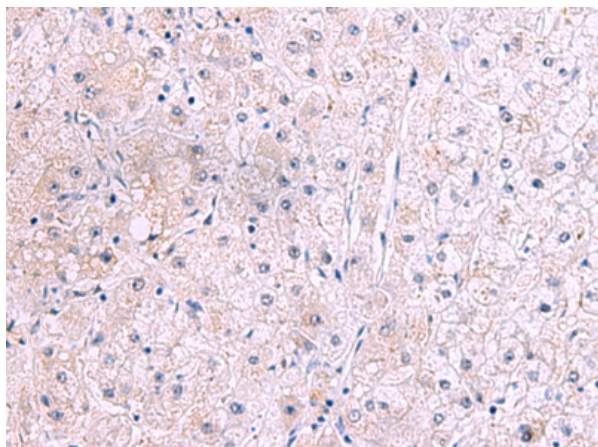
Purification: Antigen affinity purification

Species Reactivity: Human, Mouse

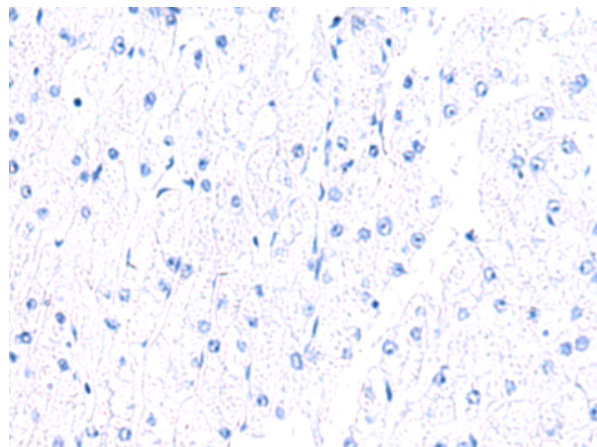
Constituents: PBS (without Mg²⁺ and Ca²⁺), pH 7.4, 150 mM NaCl, 0.05% Sodium Azide and 40% glycerol

Research Areas: Epigenetics and Nuclear Signaling

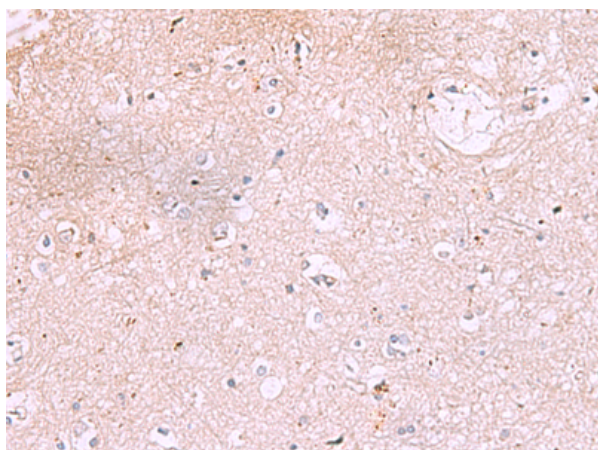
Storage & Shipping: Store at -20°C. Avoid repeated freezing and thawing



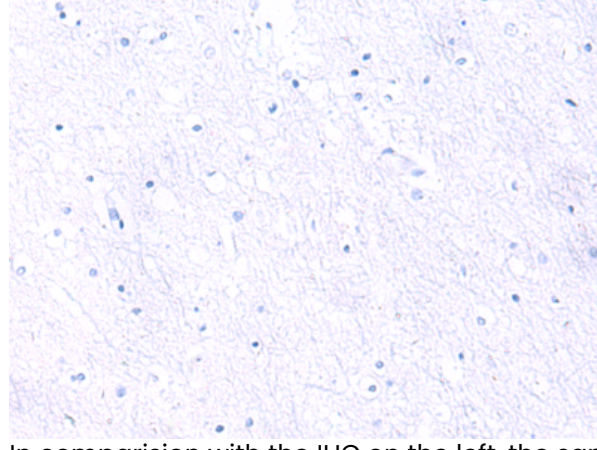
Immunohistochemistry analysis of paraffin embedded Human liver cancer tissue using 222248(IRX2 Antibody) at a dilution of 1/45(Cytoplasm).



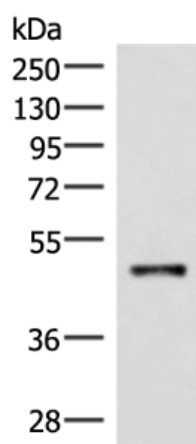
In comparison with the IHC on the left, the same paraffin-embedded Human liver cancer tissue is first treated with the synthetic peptide and then with 222248(Anti-IRX2 Antibody) at dilution 1/45.



The image on the left is immunohistochemistry of paraffin-embedded Human brain tissue using 222248(Anti-IRX2 Antibody) at a dilution of 1/45.



In comparison with the IHC on the left, the same paraffin-embedded Human brain tissue is first treated with synthetic peptide and then with D264275(Anti-IRX2 Antibody) at dilution 1/45.



Gel: 8%SDS-PAGE, Lysate: 40 µg;
Lane: Mouse lung tissue lysate;
Primary antibody: 222248(IRX2 Antibody) at dilution 1/300;
Secondary antibody: Goat anti rabbit IgG at 1/8000 dilution;
Exposure time: 20 seconds



Product Description

Pioneering GTPase and Oncogene Product Development since 2010
