

## IRX1 RABBIT PAB

**Cat.#:** S222247

**Product Name:** Anti-IRX1 Rabbit Polyclonal Antibody

**Synonyms:** IRX-5; IRXA1

**UNIPROT ID:** P78414 (Gene Accession - NP\_077313 )

**Background:** This gene encodes a member of the Iroquois homeobox protein family. Homeobox genes in this family are involved in pattern formation in the embryo. The gene product has been identified as a tumor suppressor in gastric and head and neck cancers. A pseudogene of this gene is located on chromosome 13.

**Immunogen:** Synthetic peptide of human IRX1

**Applications:** ELISA, WB, IHC

**Recommended Dilutions:** IHC: 40-200;WB: 500-2000;ELISA: 5000-10000

**Host Species:** Rabbit

**Clonality:** Rabbit Polyclonal

**Isotype:** Immunogen-specific rabbit IgG

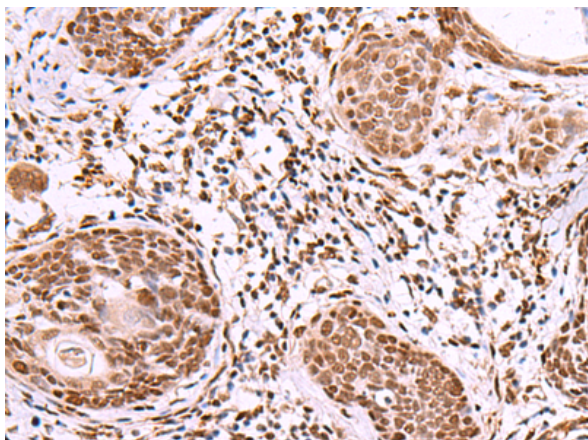
**Purification:** Antigen affinity purification

**Species Reactivity:** Human, Mouse

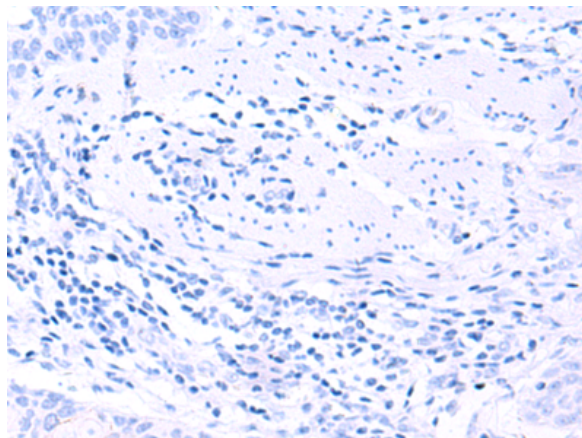
**Constituents:** PBS (without Mg<sup>2+</sup> and Ca<sup>2+</sup>), pH 7.4, 150 mM NaCl, 0.05% Sodium Azide and 40% glycerol

**Research Areas:** Epigenetics and Nuclear Signaling, Neuroscience

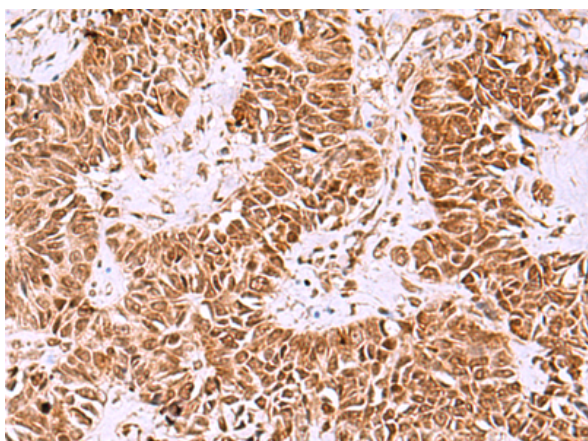
**Storage & Shipping:** Store at -20°C. Avoid repeated freezing and thawing



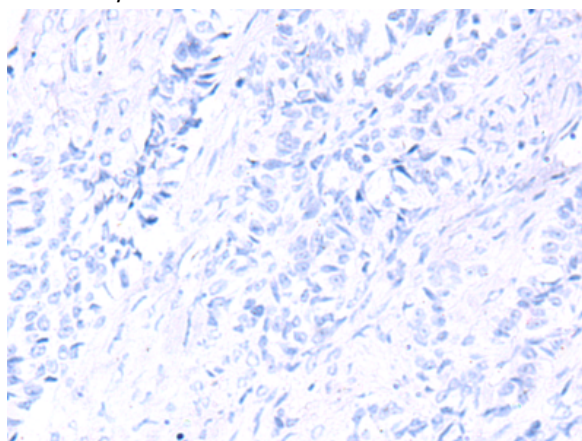
Immunohistochemistry analysis of paraffin embedded Human esophagus cancer tissue using 222247(IRX1 Antibody) at a dilution of 1/40(Nucleus).



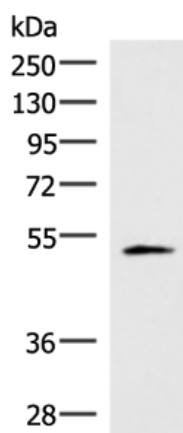
In comparison with the IHC on the left, the same paraffin-embedded Human esophagus cancer tissue is first treated with the synthetic peptide and then with 222247(Anti-IRX1 Antibody) at dilution 1/40.



The image on the left is immunohistochemistry of paraffin-embedded Human ovarian cancer tissue using 222247(Anti-IRX1 Antibody) at a dilution of 1/40.



In comparison with the IHC on the left, the same paraffin-embedded Human ovarian cancer tissue is first treated with synthetic peptide and then with D264274(Anti-IRX1 Antibody) at dilution 1/40.



Gel: 8%SDS-PAGE, Lysate: 40 µg;  
Lane: Human heart tissue lysate;  
Primary antibody: 222247(IRX1 Antibody) at dilution 1/400;  
Secondary antibody: Goat anti rabbit IgG at 1/8000 dilution;  
Exposure time: 1 minute



# Product Description

Pioneering GTPase and Oncogene Product Development since 2010

---