

## IRF7 RABBIT MAB

**Cat.#:** N263104

**Product Name:** Anti-IRF7 Rabbit Monoclonal Antibody

**Synonyms:** IRF7; Interferon regulatory factor 7; IRF-7; IRF7A; IRF-7H

**UNIPROT ID:** Q92985

**Background:** Binds to the Q promoter (Qp) of EBV nuclear antigen 1 a (EBNA1) and may play a role in the regulation of EBV latency. Can activate distinct gene expression programs in macrophages and regulate the anti-tumor properties of primary macrophages.

**Immunogen:** A synthetic peptide of human IRF7

**Applications:** WB,IHC-F,IHC-P,ICC/IF,IP

**Recommended Dilutions:** WB: 1/500-1/1000 IHC: 1/50-1/100 IF: 1/50-1/200 IP: 1/20

**Host Species:** Rabbit

**Clonality:** Rabbit Monoclonal

**Clone ID:** R04-1E1

**MW:** Calculated MW: 54 kDa; Observed MW: 54 kDa

**Isotype:** IgG

**Purification:** Affinity Purified

**Species Reactivity:** Human,Rat

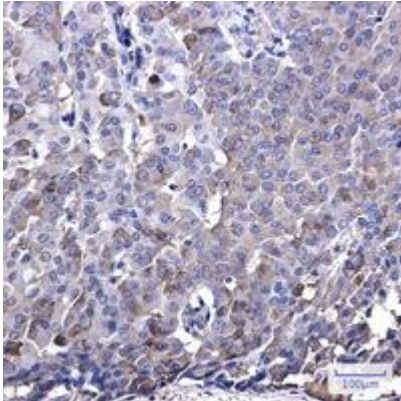
**Conjugation:** Unconjugated

**Modification:** Unmodified

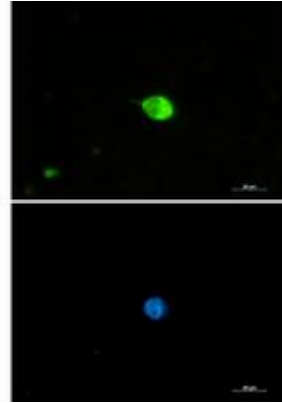
**Constituents:** PBS (without Mg<sup>2+</sup> and Ca<sup>2+</sup>), pH 7.3 containing 50% glycerol, 0.5% BSA and 0.02% sodium azide

**Research Areas:** Immunology

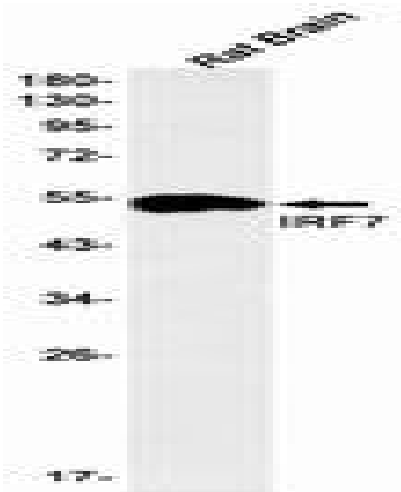
**Storage & Shipping:** Store at -20°C. Avoid repeated freezing and thawing



Immunohistochemistry analysis of paraffin-embedded Human breast cancer tissue using IRF7 antibody. High-pressure and temperature Sodium Citrate pH 6.0 was used for antigen retrieval.



Immunocytochemistry analysis of IRF7 (green) in 293 using IRF7 antibody, and DAPI (blue).



Western blot analysis of IRF7 in rat Brain lysates using IRF7 antibody.