

IRF6 RABBIT PAB

Cat.#: S216591

Product Name: Anti-IRF6 Rabbit Polyclonal Antibody

Synonyms: LPS; PIT; PPS; VWS; OFC6; PPS1; VWS1

UNIPROT ID: O14896 (Gene Accession - BC014852)

Background: This gene encodes a member of the interferon regulatory transcription factor (IRF) family. Family members share a highly-conserved N-terminal helix-turn-helix DNA-binding domain and a less conserved C-terminal protein-binding domain. The encoded protein may be a transcriptional activator. Mutations in this gene can cause van der Woude syndrome and popliteal pterygium syndrome. Mutations in this gene are also associated with non-syndromic orofacial cleft type 6. Alternate splicing results in multiple transcript variants.

Immunogen: Fusion protein of human IRF6

Applications: ELISA, WB, IHC

Recommended Dilutions: IHC: 50-200;WB: 200-1000;ELISA: 1000-2000

Host Species: Rabbit

Clonality: Rabbit Polyclonal

Isotype: Immunogen-specific rabbit IgG

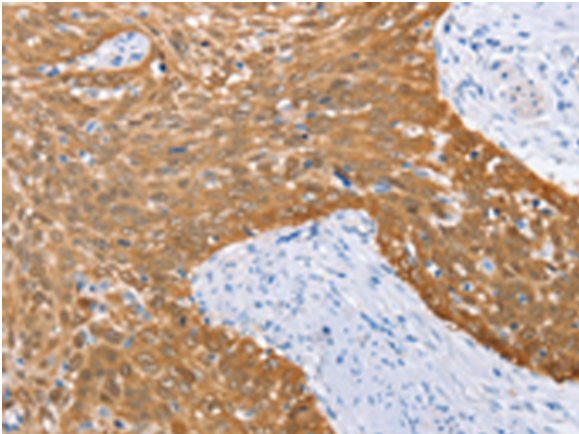
Purification: Antigen affinity purification

Species Reactivity: Human, Mouse

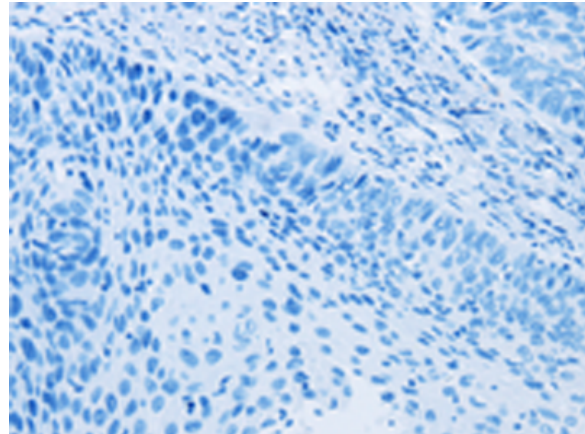
Constituents: PBS (without Mg²⁺ and Ca²⁺), pH 7.4, 150 mM NaCl, 0.05% Sodium Azide and 40% glycerol

Research Areas: Epigenetics and Nuclear Signaling, Immunology, Stem Cells

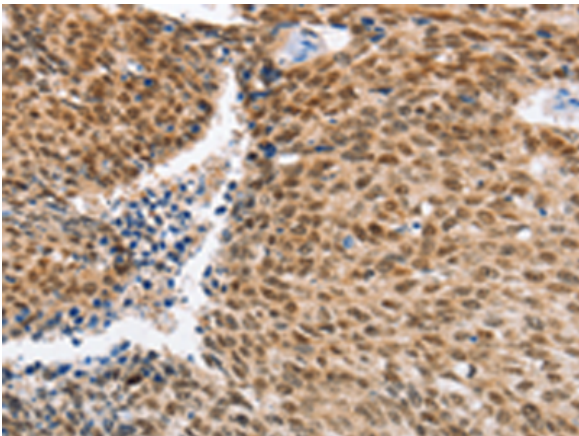
Storage & Shipping: Store at -20°C. Avoid repeated freezing and thawing



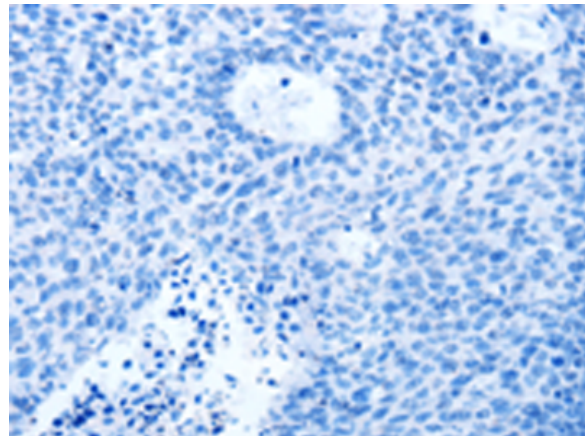
Immunohistochemistry analysis of paraffin embedded Human cervical cancer tissue using 216591(IRF6 Antibody) at a dilution of 1/50(Nucleus and Cytoplasm).



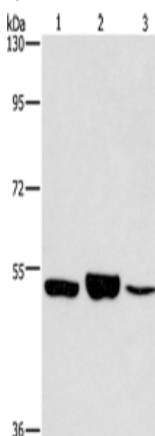
In comparison with the IHC on the left, the same paraffin-embedded Human cervical cancer tissue is first treated with the fusion protein and then with 216591(Anti-IRF6 Antibody) at dilution 1/50.



The image on the left is immunohistochemistry of paraffin-embedded Human lung cancer tissue using 216591(Anti-IRF6 Antibody) at a dilution of 1/50.



In comparison with the IHC on the left, the same paraffin-embedded Human lung cancer tissue is first treated with fusion protein and then with D220876(Anti-IRF6 Antibody) at dilution 1/50.



Gel: 8%SDS-PAGE, Lysate: 40 µg;
Lane 1-3: 231 cells, mouse kidney tissue, Mouse lung tissue;
Primary antibody: 216591(IRF6 Antibody) at dilution 1/400;
Secondary antibody: Goat anti rabbit IgG at 1/8000 dilution;
Exposure time: 5 minutes



Product Description

Pioneering GTPase and Oncogene Product Development since 2010
