

IRF4 RABBIT PAB

Cat.#: S216590

Product Name: Anti-IRF4 Rabbit Polyclonal Antibody

Synonyms: MUM1; LSIRF; SHEP8; NF-EM5

UNIPROT ID: Q15306 (Gene Accession - BC015752)

Background: The protein encoded by this gene belongs to the IRF (interferon regulatory factor) family of transcription factors, characterized by a unique tryptophan pentad repeat DNA-binding domain. The IRFs are important in the regulation of interferons in response to infection by virus, and in the regulation of interferon-inducible genes. This family member is lymphocyte specific and negatively regulates Toll-like-receptor (TLR) signaling that is central to the activation of innate and adaptive immune systems. A chromosomal translocation involving this gene and the IgH locus, t(6;14)(p25;q32), may be a cause of multiple myeloma. Alternatively spliced transcript variants have been found for this gene.

Immunogen: Fusion protein of human IRF4

Applications: ELISA, IHC

Recommended Dilutions: IHC: 30-150; ELISA: 2000-5000

Host Species: Rabbit

Clonality: Rabbit Polyclonal

Isotype: Immunogen-specific rabbit IgG

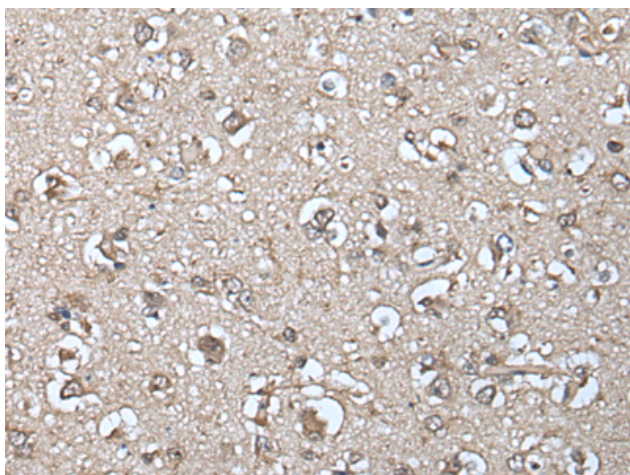
Purification: Antigen affinity purification

Species Reactivity: Human, Mouse

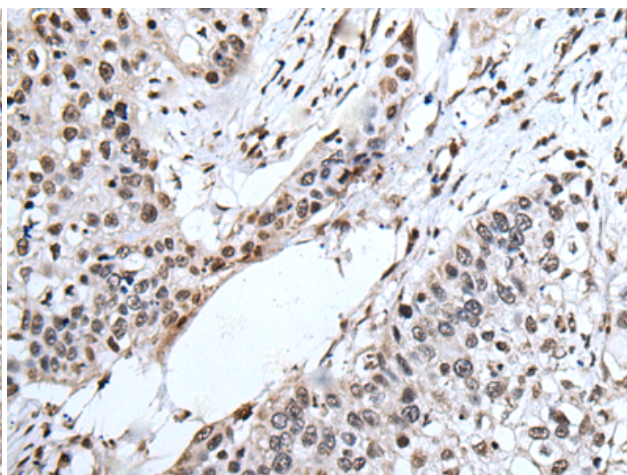
Constituents: PBS (without Mg²⁺ and Ca²⁺), pH 7.4, 150 mM NaCl, 0.05% Sodium Azide and 40% glycerol

Research Areas: Epigenetics and Nuclear Signaling, Cancer

Storage & Shipping: Store at -20°C. Avoid repeated freezing and thawing



Immunohistochemistry analysis of paraffin-embedded Human brain tissue using 216590(IRF4 Antibody) at a dilution of 1/40(Nucleus).



Immunohistochemistry analysis of paraffin-embedded Human lung cancer tissue using 216590(Anti-IRF4 Antibody) at a dilution of 1/40.