

## IQGAP2 RABBIT MAB

**Cat.#:** N263388

**Product Name:** Anti-IQGAP2 Rabbit Monoclonal Antibody

**Synonyms:** Ras GTPase-activating-like protein IQGAP2

**UNIPROT ID:** Q13576

**Background:** Binds to activated CDC42 and RAC1 but does not seem to stimulate their GTPase activity. Associates with calmodulin.

**Immunogen:** Recombinant protein of human IQGAP2

**Applications:** WB,IHC-P

**Recommended Dilutions:** WB: 1/500-1/1000 IHC: 1/50-1/100

**Host Species:** Rabbit

**Clonality:** Rabbit Monoclonal

**Clone ID:** R08-2C6

**MW:** Calculated MW: 181 kDa; Observed MW: 181 kDa

**Isotype:** IgG

**Purification:** Affinity Purified

**Species Reactivity:** Human

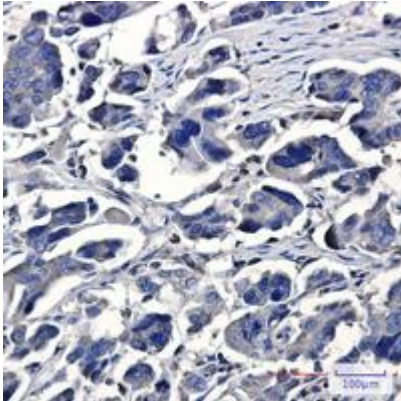
**Conjugation:** Unconjugated

**Modification:** Unmodified

**Constituents:** PBS (without Mg<sup>2+</sup> and Ca<sup>2+</sup>), pH 7.3 containing 50% glycerol, 0.5% BSA and 0.02% sodium azide

**Research Areas:** Signal Transduction

**Storage & Shipping:** Store at -20°C. Avoid repeated freezing and thawing



Immunohistochemistry analysis of paraffin-embedded Human Cholangiocarcinoma using IQGAP2 antibody. High-pressure and temperature Sodium Citrate pH 6.0 was used for antigen retrieval.



Western blot analysis of IQGAP2 in A549, HL-60 lysates using IQGAP2 antibody.