

IPO9 RABBIT PAB

Cat.#: S220633

Product Name: Anti-IPO9 Rabbit Polyclonal Antibody

Synonyms: Imp9

UNIPROT ID: Q96P70 (Gene Accession - NP_060555)

Background: Importin-9, also known as Imp9 or IPO9, is a 1,041 amino acid protein that contains one importin N-terminal domain and belongs to the Importin-? family. Localized to both the nucleus and the cytoplasm, Importin-9 functions as a nuclear transport receptor that mediates the docking of the Importin complex to the nuclear pore complex (NPC). Importin-9 mediates nuclear import of H2B histone, Ribosomal Protein S7 and Ribosomal Protein L18A. The gene encoding Importin-9 is located on human chromosome 1, the largest human chromosome that spans about 260 million base pairs and makes up 8% of the human genome.

Immunogen: Synthetic peptide of human IPO9

Applications: ELISA, WB, IHC

Recommended Dilutions: IHC: 50-200;WB: 200-1000;ELISA: 1000-2000

Host Species: Rabbit

Clonality: Rabbit Polyclonal

Isotype: Immunogen-specific rabbit IgG

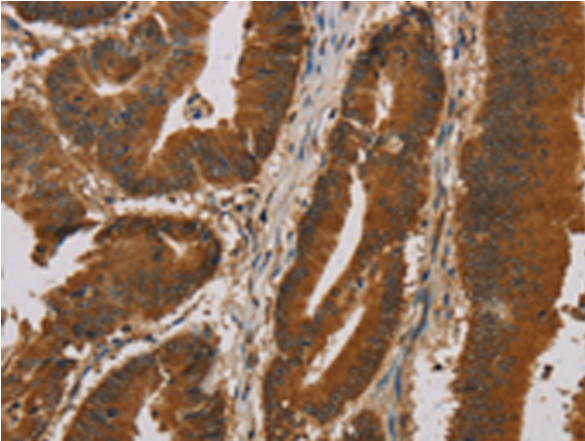
Purification: Antigen affinity purification

Species Reactivity: Human, Mouse

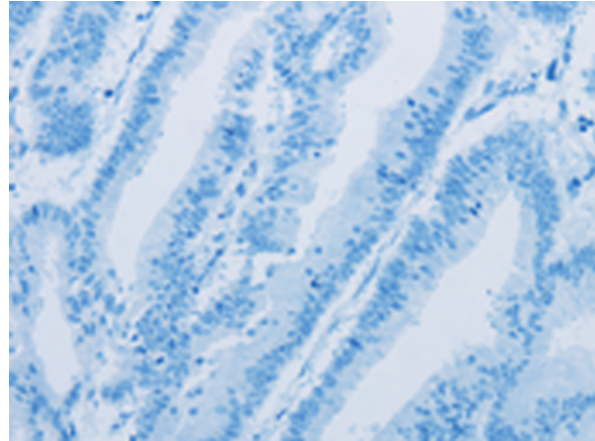
Constituents: PBS (without Mg²⁺ and Ca²⁺), pH 7.4, 150 mM NaCl, 0.05% Sodium Azide and 40% glycerol

Research Areas: Signal Transduction, Epigenetics and Nuclear Signaling, Cancer

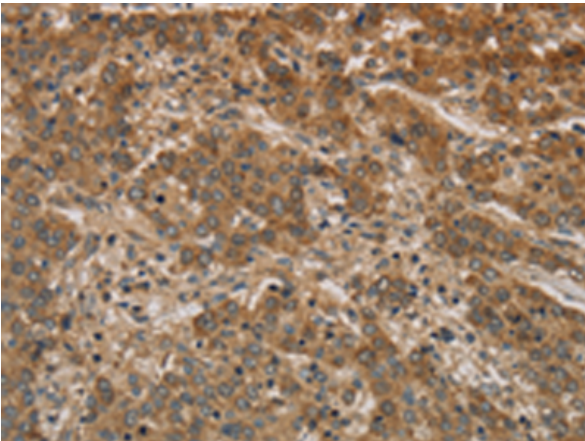
Storage & Shipping: Store at -20°C. Avoid repeated freezing and thawing



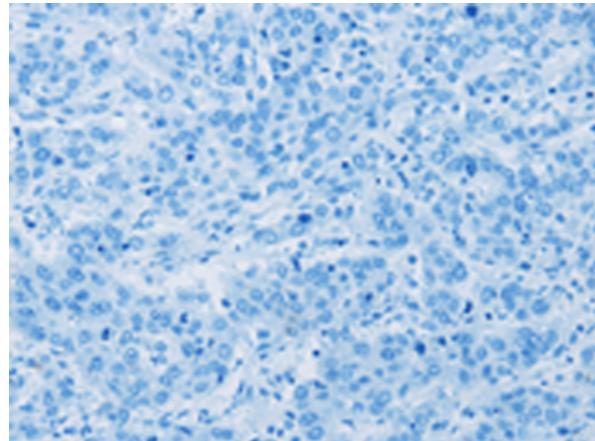
Immunohistochemistry analysis of paraffin embedded Human colon cancer tissue using 220633(IPO9 Antibody) at a dilution of 1/20(Cytoplasm).



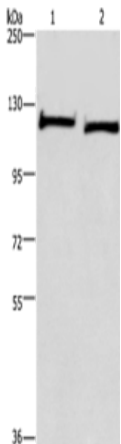
In comparison with the IHC on the left, the same paraffin-embedded Human colon cancer tissue is first treated with the synthetic peptide and then with 220633(Anti-IPO9 Antibody) at dilution 1/20.



The image on the left is immunohistochemistry of paraffin-embedded Human liver cancer tissue using 220633(Anti-IPO9 Antibody) at a dilution of 1/20.



In comparison with the IHC on the left, the same paraffin-embedded Human liver cancer tissue is first treated with synthetic peptide and then with D261793(Anti-IPO9 Antibody) at dilution 1/20.



Gel: 6%SDS-PAGE, Lysate: 40 µg;
Lane 1-2: Human fetal brain tissue, Hela cells;
Primary antibody: 220633(IPO9 Antibody) at dilution 1/200;
Secondary antibody: Goat anti rabbit IgG at 1/8000 dilution;
Exposure time: 1 minute



Product Description

Pioneering GTPase and Oncogene Product Development since 2010
