

INTEGRIN BETA 7 RABBIT PAB

Cat.#: N225229

Product Name: Anti-Integrin beta 7 Rabbit pAb

Synonyms: Integrin beta-7 (Gut homing receptor beta subunit)

UNIPROT ID: P26010

Background: Integrin alpha-4/beta-7 (Peyer patches-specific homing receptor LPAM-1) is an adhesion molecule that mediates lymphocyte migration and homing to gut-associated lymphoid tissue (GALT).

Immunogen: Synthesized peptide derived from human Integrin β 7. at AA range: 671-720

Applications: WB,ELISA

Recommended Dilutions: WB: 1/500-1/1000 ELISA: 1/10000

Host Species: Rabbit

Clonality: Rabbit Polyclonal

Clone ID: -

MW: Calculated MW: 87 kDa; Observed MW: 130 kDa

Isotype: IgG

Purification: Affinity Purified

Species Reactivity: Human,Mouse

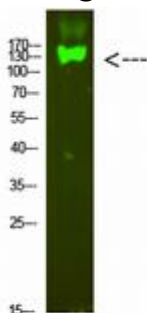
Conjugation: Unconjugated

Modification: Unmodified

Constituents: PBS (without Mg^{2+} and Ca^{2+}), pH 7.3 containing 50% glycerol, 0.5% BSA and 0.02% sodium azide

Research Areas: Signal Transduction

Storage & Shipping: Store at $-20^{\circ}C$. Avoid repeated freezing and thawing



Western blot analysis of Integrin beta 7 in mouse heart lysates using Integrin beta 7 antibody.



Product Description

Pioneering GTPase and Oncogene Product Development since 2010
