

INTEGRIN ALPHA L RABBIT MAB

Cat.#: N263257

Product Name: Anti-Integrin alpha L Rabbit Monoclonal Antibody

Synonyms: Cd11a; LFA-1; Ly-15; Ly-21; (p180); LFA-1A

UNIPROT ID: P24063

Background: Integrin ITGAL/ITGB2 is a receptor for ICAM1, ICAM2, ICAM3 and ICAM4.

Immunogen: Recombinant protein of mouse CD11a

Applications: WB,IHC-P

Recommended Dilutions: WB: 1/500-1/1000 IHC: 1/50-1/100

Host Species: Rabbit

Clonality: Rabbit Monoclonal

Clone ID: R08-314

MW: Calculated MW: 128 kDa; Observed MW: 160 kDa

Isotype: IgG

Purification: Affinity Purified

Species Reactivity: Human,Mouse

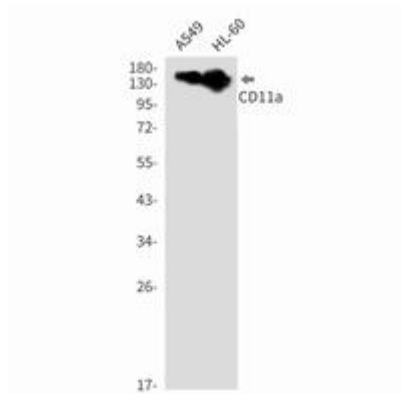
Conjugation: Unconjugated

Modification: Unmodified

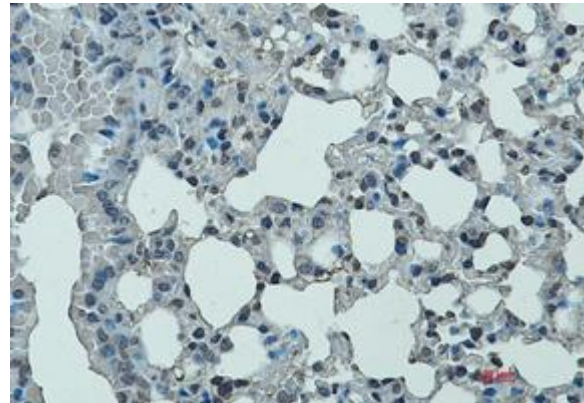
Constituents: PBS (without Mg²⁺ and Ca²⁺), pH 7.3 containing 50% glycerol, 0.5% BSA and 0.02% sodium azide

Research Areas: Tags & Cell Markers

Storage & Shipping: Store at -20°C. Avoid repeated freezing and thawing



Western blot analysis of CD11a in A549, HL-60 lysates using CD11a antibody.



Immunohistochemistry analysis of paraffin-embedded mouse lung using Integrin alpha L antibody. High-pressure and temperature Sodium Citrate pH 6.0 was used for antigen retrieval.