

## INSULIN RECEPTOR RELATED PROTEIN RABBIT PAB

**Cat.#:** N225885

**Product Name:** Anti-Insulin Receptor Related Protein Rabbit pAb

**Synonyms:** INSRR; Insulin receptor related receptor precursor; IR related receptor; IRR; Srr

**UNIPROT ID:** P14616

**Background:** This receptor probably binds an insulin related protein and has a tyrosine-protein kinase activity. It phosphorylates the insulin receptor substrates IRS-1 and IRS-2.

**Immunogen:** A synthesized peptide derived from human Insulin Receptor R

**Applications:** WB,IHC-P

**Recommended Dilutions:** WB: 1/500-1/1000 IHC: 1/50-1/100

**Host Species:** Rabbit

**Clonality:** Rabbit Polyclonal

**Clone ID:** -

**MW:** Calculated MW: 144 kDa; Observed MW: 80 kDa

**Isotype:** IgG

**Purification:** Affinity Chromatography

**Species Reactivity:** Human,Mouse,Rat

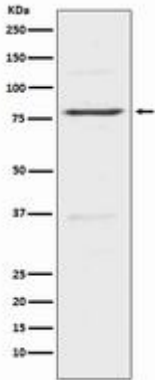
**Conjugation:** Unconjugated

**Modification:** Unmodified

**Constituents:** PBS (without Mg<sup>2+</sup> and Ca<sup>2+</sup>), pH 7.3 containing 50% glycerol, 0.5% BSA and 0.02% sodium azide

**Research Areas:** Signal Transduction

**Storage & Shipping:** Store at -20°C. Avoid repeated freezing and thawing



Western blot analysis of Insulin Receptor R in HeLa lysates using Insulin Receptor Related Protein antibody.