

INSULIN RABBIT PAB

Cat.#: N225223

Product Name: Anti-Insulin Rabbit pAb

Synonyms: Insulin [Cleaved into: Insulin B chain; Insulin A chain]

UNIPROT ID: P01308

Background: Insulin decreases blood glucose concentration. It increases cell permeability to monosaccharides, amino acids and fatty acids. It accelerates glycolysis, the pentose phosphate cycle, and glycogen synthesis in liver.

Immunogen: Synthetic peptide from human protein at AA range: 30-70

Applications: IHC-P,ELISA

Recommended Dilutions: IHC: 1/50-1/100 ELISA: 1/10000

Host Species: Rabbit

Clonality: Rabbit Polyclonal

Clone ID: -

MW: -

Isotype: IgG

Purification: Affinity Purified

Species Reactivity: Human,Mouse,Rat

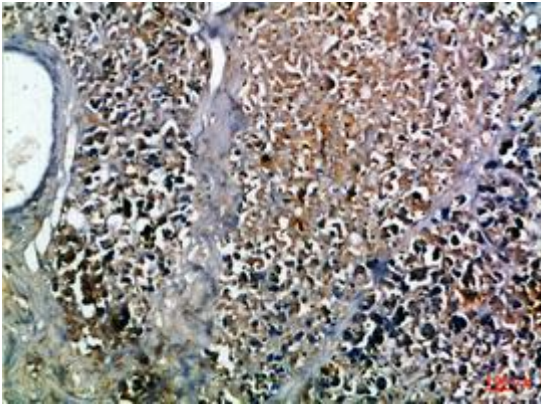
Conjugation: Unconjugated

Modification: Unmodified

Constituents: PBS (without Mg²⁺ and Ca²⁺), pH 7.3 containing 50% glycerol, 0.5% BSA and 0.02% sodium azide

Research Areas: Signal Transduction

Storage & Shipping: Store at -20°C. Avoid repeated freezing and thawing



Immunohistochemistry analysis of paraffin-embedded Human pancreas using Insulin antibody. High-pressure and temperature Sodium Citrate pH 6.0 was used for antigen retrieval.