

INSULIN DEGRADING ENZYME RABBIT MAB

Cat.#: N263387

Product Name: Anti-Insulin Degrading Enzyme Rabbit Monoclonal Antibody

Synonyms: INSULYSIN; Insulin degrading enzyme; IDE

UNIPROT ID: P14735

Background: This gene encodes a zinc metallopeptidase that degrades intracellular insulin, and thereby terminates insulin's activity, as well as participating in intercellular peptide signalling by degrading diverse peptides such as glucagon, amylin, bradykinin, and kallidin. The preferential affinity of this enzyme for insulin results in insulin-mediated inhibition of the degradation of other peptides such as beta-amyloid.

Immunogen: A synthetic peptide of human Insulin degrading enzyme/IDE

Applications: WB, ICC/IF

Recommended Dilutions: WB: 1/500-1/1000 IF: 1/50-1/200

Host Species: Rabbit

Clonality: Rabbit Monoclonal

Clone ID: R04-4E8

MW: Calculated MW: 118 kDa; Observed MW: 118 kDa

Isotype: IgG

Purification: Affinity Purified

Species Reactivity: Human

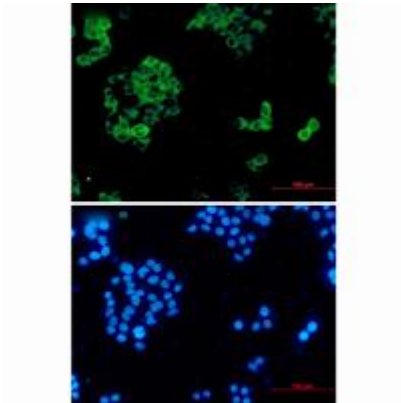
Conjugation: Unconjugated

Modification: Unmodified

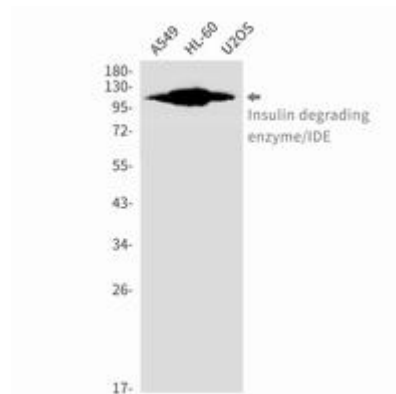
Constituents: PBS (without Mg²⁺ and Ca²⁺), pH 7.3 containing 50% glycerol, 0.5% BSA and 0.02% sodium azide

Research Areas: Neuroscience

Storage & Shipping: Store at -20°C. Avoid repeated freezing and thawing



Immunocytochemistry analysis of Insulin degrading enzyme/IDE (green) in HeLa using Insulin degrading enzyme/IDE antibody, and DAPI (blue)



Western blot analysis of Insulin degrading enzyme/IDE in A549, HL-60, U2OS lysates using Insulin Degrading Enzyme antibody.