

## INSM2 RABBIT PAB

**Cat.#:** S222230

**Product Name:** Anti-INSM2 Rabbit Polyclonal Antibody

**Synonyms:** IA6; IA-6; mlt1

**UNIPROT ID:** Q96T92 (Gene Accession - NP\_115983 )

**Background:** May function as a growth suppressor or tumor suppressor in liver cells and in certain neurons.

**Immunogen:** Synthetic peptide of human INSM2

**Applications:** ELISA, IHC

**Recommended Dilutions:** IHC: 30-150; ELISA: 5000-10000

**Host Species:** Rabbit

**Clonality:** Rabbit Polyclonal

**Isotype:** Immunogen-specific rabbit IgG

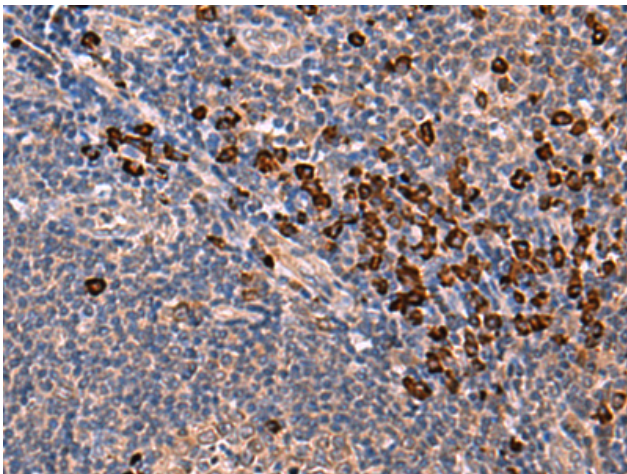
**Purification:** Antigen affinity purification

**Species Reactivity:** Human

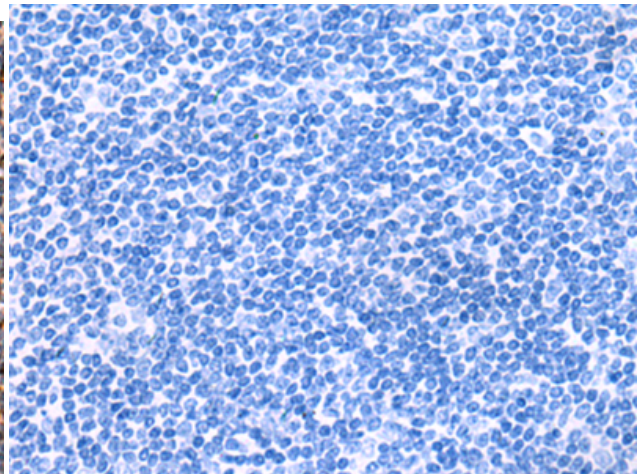
**Constituents:** PBS (without Mg<sup>2+</sup> and Ca<sup>2+</sup>), pH 7.4, 150 mM NaCl, 0.05% Sodium Azide and 40% glycerol

**Research Areas:** Epigenetics and Nuclear Signaling

**Storage & Shipping:** Store at -20°C. Avoid repeated freezing and thawing



Immunohistochemistry analysis of paraffin embedded Human tonsil tissue using 222230 (INSM2 Antibody) at a dilution of 1/35 (Cytoplasm).



In comparison with the IHC on the left, the same paraffin-embedded Human tonsil tissue is first treated with the synthetic peptide and then with 222230 (Anti-INSM2 Antibody) at dilution 1/35.