

## INPP5K RABBIT PAB

**Cat.#:** S219127

**Product Name:** Anti-INPP5K Rabbit Polyclonal Antibody

**Synonyms:** PPS; SKIP; MDCCAID

**UNIPROT ID:** Q9BT40 (Gene Accession - BC004362 )

**Background:** This gene encodes a protein with 5-phosphatase activity toward polyphosphate inositol. The protein localizes to the cytosol in regions lacking actin stress fibers. It is thought that this protein may negatively regulate the actin cytoskeleton. Alternatively spliced transcript variants encoding different isoforms have been identified.

**Immunogen:** Fusion protein of human INPP5K

**Applications:** ELISA, IHC

**Recommended Dilutions:** IHC: 50-300; ELISA: 5000-10000

**Host Species:** Rabbit

**Clonality:** Rabbit Polyclonal

**Isotype:** Immunogen-specific rabbit IgG

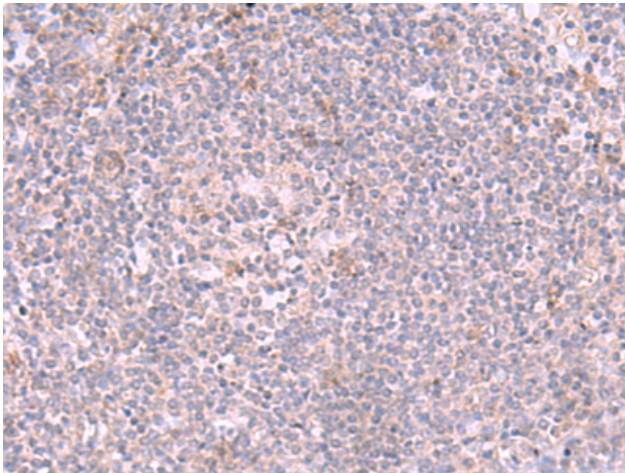
**Purification:** Antigen affinity purification

**Species Reactivity:** Human

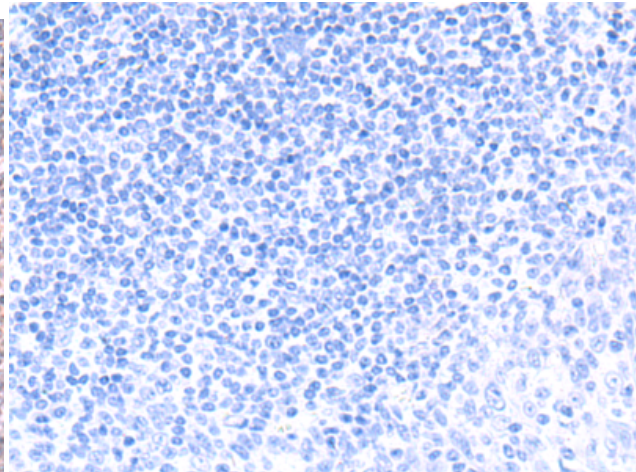
**Constituents:** PBS (without Mg<sup>2+</sup> and Ca<sup>2+</sup>), pH 7.4, 150 mM NaCl, 0.05% Sodium Azide and 40% glycerol

**Research Areas:** Signal Transduction

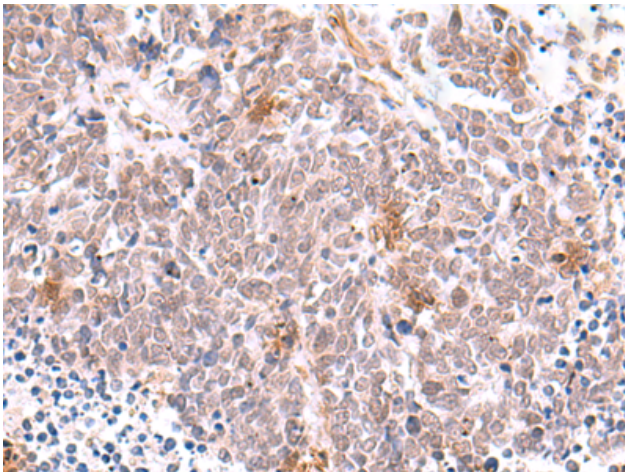
**Storage & Shipping:** Store at -20°C. Avoid repeated freezing and thawing



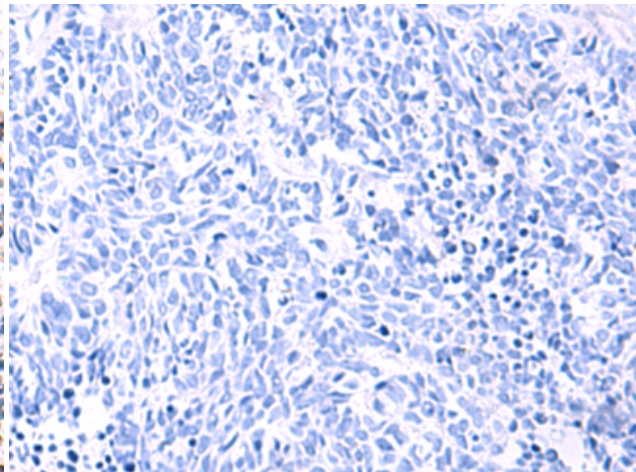
Immunohistochemistry analysis of paraffin embedded Human tonsil tissue using 219127(INPP5K Antibody) at a dilution of 1/90(Cytoplasm or Nucleus).



In comparison with the IHC on the left, the same paraffin-embedded Human tonsil tissue is first treated with the fusion protein and then with 219127(Anti-INPP5K Antibody) at dilution 1/90.



The image on the left is immunohistochemistry of paraffin-embedded Human lung cancer tissue using 219127(Anti-INPP5K Antibody) at a dilution of 1/90.



In comparison with the IHC on the left, the same paraffin-embedded Human lung cancer tissue is first treated with fusion protein and then with D225888(Anti-INPP5K Antibody) at dilution 1/90.