

## INHIBIN BETA E RABBIT PAB

**Cat.#:** N225015

**Product Name:** Anti-Inhibin beta E Rabbit pAb

**Synonyms:** INHBE; Inhibin beta E chain; Activin beta-E chain

**UNIPROT ID:** P58166

**Background:** Inhibins and activins inhibit and activate, respectively, the secretion of follitropin by the pituitary gland.

**Immunogen:** The antiserum was produced against synthesized peptide derived from the C-terminal region of human INHBE. AA range:301-350

**Applications:** WB,IHC-P,ELISA

**Recommended Dilutions:** WB: 1/500-1/1000 IHC: 1/50-1/100 ELISA: 1/10000

**Host Species:** Rabbit

**Clonality:** Rabbit Polyclonal

**Clone ID:** -

**MW:** Calculated MW: 39 kDa; Observed MW: 39 kDa

**Isotype:** IgG

**Purification:** Affinity Purified

**Species Reactivity:** Human,Mouse,Rat

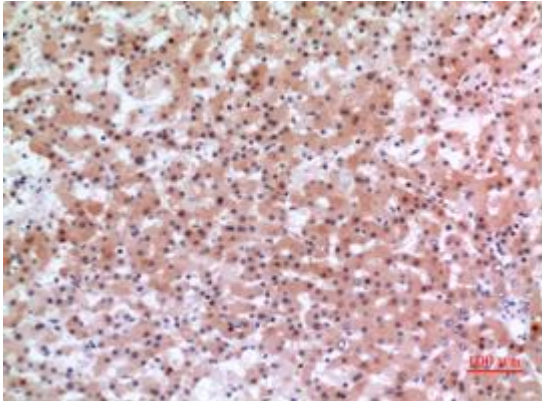
**Conjugation:** Unconjugated

**Modification:** Unmodified

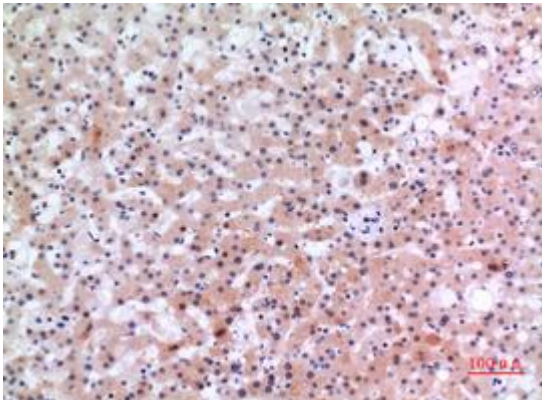
**Constituents:** PBS (without Mg<sup>2+</sup> and Ca<sup>2+</sup>), pH 7.3 containing 50% glycerol, 0.5% BSA and 0.02% sodium azide

**Research Areas:** Signal Transduction

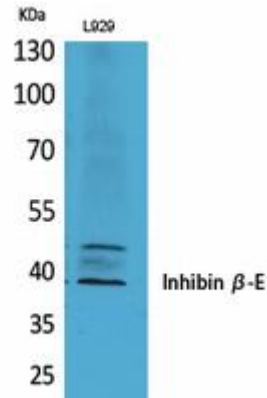
**Storage & Shipping:** Store at -20°C. Avoid repeated freezing and thawing



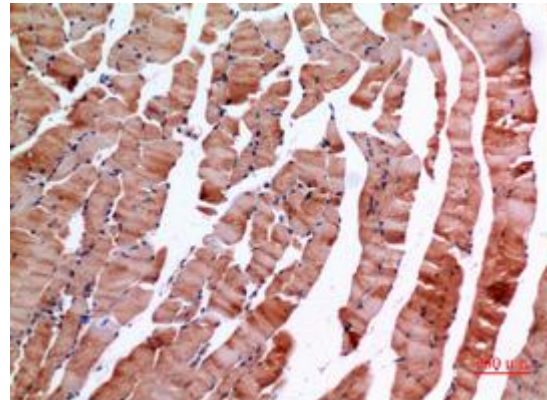
Immunohistochemistry analysis of paraffin-embedded Human liver using Inhibin beta E antibody. High-pressure and temperature Sodium Citrate pH 6.0 was used for antigen retrieval.



Immunohistochemistry analysis of paraffin-embedded Human liver using Inhibin beta E antibody. High-pressure and temperature Sodium Citrate pH 6.0 was used for antigen retrieval.



Western blot analysis of Inhibin beta E in L929 lysates using Inhibin beta E antibody.



Immunohistochemistry analysis of paraffin-embedded mouse muscle using Inhibin beta E antibody. High-pressure and temperature Sodium Citrate pH 6.0 was used for antigen retrieval.