

INDOLEAMINE 2,3-DIOXYGENASE RABBIT MAB

Cat.#: N262406

Product Name: Anti-Indoleamine 2,3-dioxygenase Rabbit Monoclonal Antibody

Synonyms: 3-dioxygenase; IDO 1; IDO; IDO1; INDO; indolamine 2; 3 dioxygenase; Indole 2 3 dioxygenase

UNIPROT ID: P14902

Background: Catalyzes the cleavage of the pyrrol ring of tryptophan and incorporates both atoms of a molecule of oxygen.

Immunogen: Recombinant protein of human Indoleamine 2,3-dioxygenase

Applications: WB,IHC-F,IHC-P,ICC/IF,IP

Recommended Dilutions: WB: 1/500-1/1000 IHC: 1/50-1/100 IF: 1/50-1/200 IP: 1/20

Host Species: Rabbit

Clonality: Rabbit Monoclonal

Clone ID: R03-5D4

MW: Calculated MW: 45 kDa; Observed MW: 45 kDa

Isotype: IgG

Purification: Affinity Purified

Species Reactivity: Human

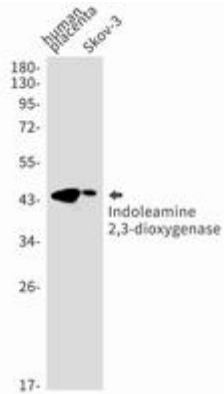
Conjugation: Unconjugated

Modification: Unmodified

Constituents: PBS (without Mg²⁺ and Ca²⁺), pH 7.3 containing 50% glycerol, 0.5% BSA and 0.02% sodium azide

Research Areas: Signal Transduction

Storage & Shipping: Store at -20°C. Avoid repeated freezing and thawing



Western blot analysis of Indoleamine 2, 3-dioxygenase in Human placenta, SKOV-3 lysates using Indoleamine 2, 3-dioxygenase antibody.