

IMPAD1 RABBIT PAB

Cat.#: S214410

Product Name: Anti-IMPAD1 Rabbit Polyclonal Antibody

Synonyms: GPAPP; IMP 3; IMP-3; IMPA3

UNIPROT ID: Q9NX62 (Gene Accession - NP_060283)

Background: This gene encodes a member of the inositol monophosphatase family. The encoded protein is localized to the Golgi apparatus and catalyzes the hydrolysis of phosphoadenosine phosphate (PAP) to adenosine monophosphate (AMP). Mutations in this gene are a cause of GRAPP type chondrodysplasia with joint dislocations, and a pseudogene of this gene is located on the long arm of chromosome 1.

Immunogen: Synthetic peptide of human IMPAD1

Applications: ELISA, IHC

Recommended Dilutions: IHC: 25-100; ELISA: 1000-2000

Host Species: Rabbit

Clonality: Rabbit Polyclonal

Isotype: Immunogen-specific rabbit IgG

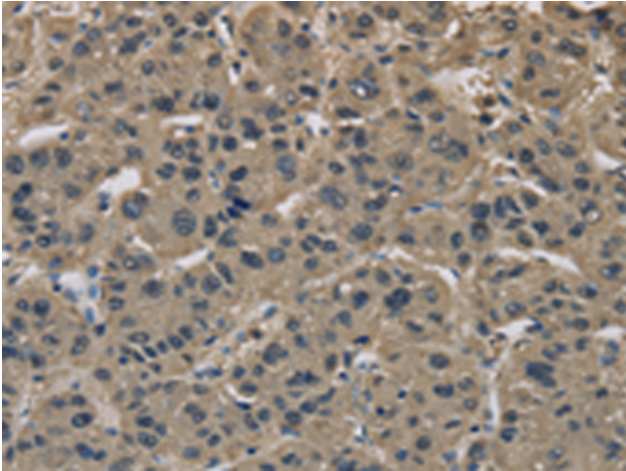
Purification: Antigen affinity purification

Species Reactivity: Human, Mouse, Rat

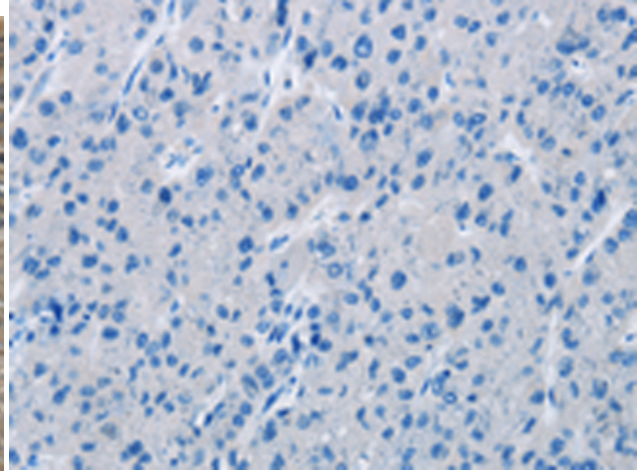
Constituents: PBS (without Mg²⁺ and Ca²⁺), pH 7.4, 150 mM NaCl, 0.05% Sodium Azide and 40% glycerol

Research Areas: Metabolism, Signal Transduction, Cardiovascular

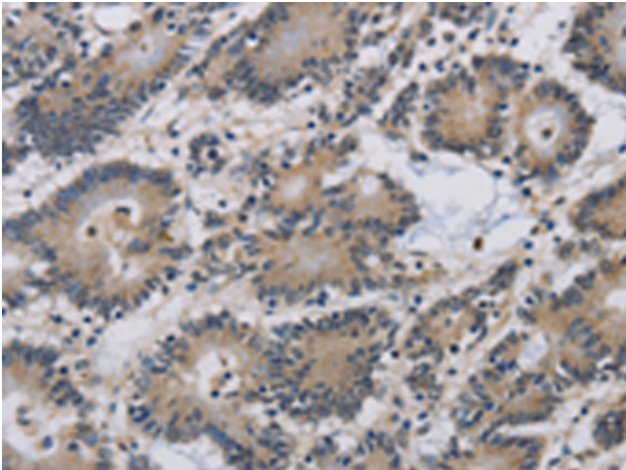
Storage & Shipping: Store at -20°C. Avoid repeated freezing and thawing



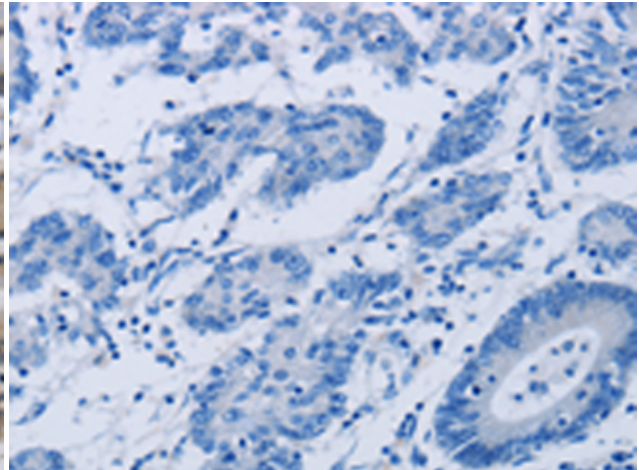
Immunohistochemistry analysis of paraffin embedded Human liver cancer tissue using 214410 (IMPAD1 Antibody) at a dilution of 1/20 (Cytoplasm).



In comparison with the IHC on the left, the same paraffin-embedded Human liver cancer tissue is first treated with the synthetic peptide and then with 214410 (Anti-IMPAD1 Antibody) at dilution 1/20.



The image on the left is immunohistochemistry of paraffin-embedded Human colon cancer tissue using 214410 (Anti-IMPAD1 Antibody) at a dilution of 1/20.



In comparison with the IHC on the left, the same paraffin-embedded Human colon cancer tissue is first treated with synthetic peptide and then with D161790 (Anti-IMPAD1 Antibody) at dilution 1/20.