

IMMT RABBIT PAB

Cat.#: S216581

Product Name: Anti-IMMT Rabbit Polyclonal Antibody

Synonyms: HMP, P87, P89, PIG4, PIG52, MINOS2, P87/89

UNIPROT ID: Q16891 (Gene Accession - BC002412)

Background: Mitochondrial inner membrane protein is a protein that in humans is encoded by the IMMT gene. IMMT has been shown to interact with BAT2. The mitochondrial inner membrane (IM) serves as the site for ATP production by hosting the oxidative phosphorylation complex machinery most notably on the crista membranes. Disruption of the crista structure has been implicated in a variety of cardiovascular and neurodegenerative diseases.

Immunogen: Fusion protein of human IMMT

Applications: ELISA, WB, IHC

Recommended Dilutions: IHC: 15-50; WB: 500-2000; ELISA: 2000-5000

Host Species: Rabbit

Clonality: Rabbit Polyclonal

Isotype: Immunogen-specific rabbit IgG

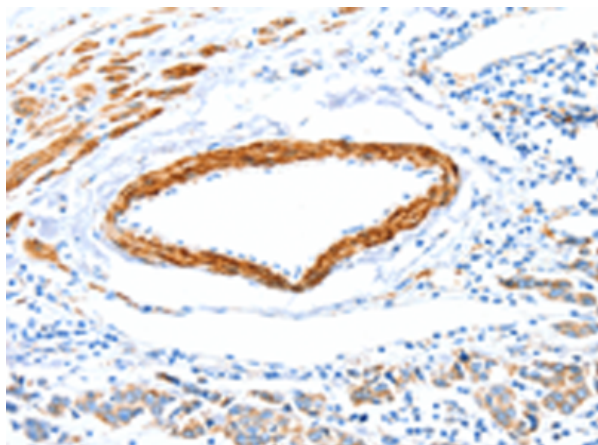
Purification: Antigen affinity purification

Species Reactivity: Human, Mouse

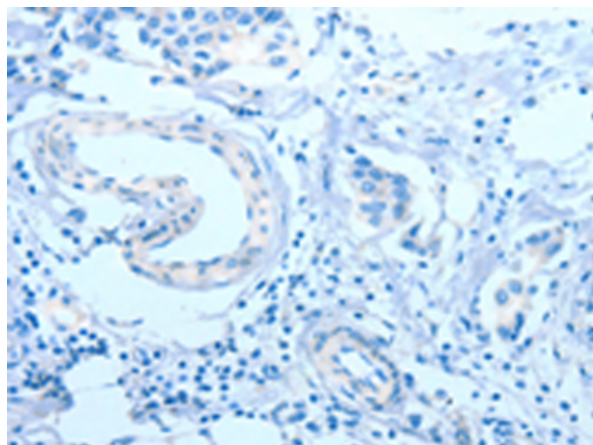
Constituents: PBS (without Mg²⁺ and Ca²⁺), pH 7.4, 150 mM NaCl, 0.05% Sodium Azide and 40% glycerol

Research Areas: Metabolism, Cardiovascular

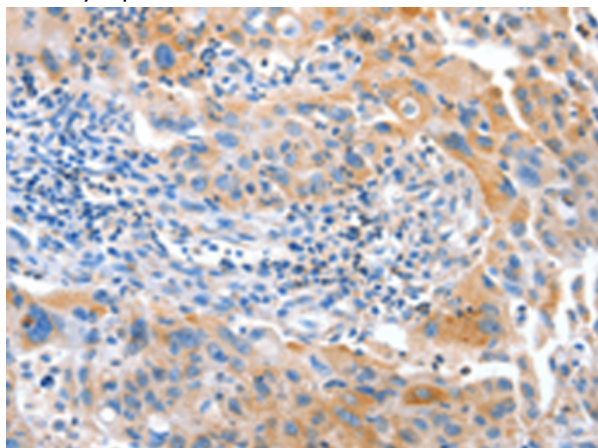
Storage & Shipping: Store at -20°C. Avoid repeated freezing and thawing



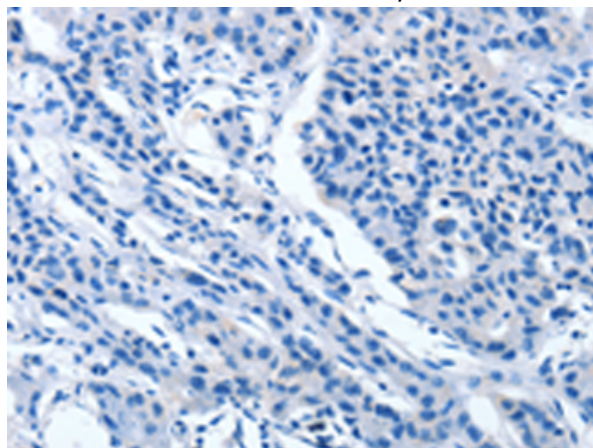
Immunohistochemistry analysis of paraffin embedded Human colon cancer tissue using 216581(IMMT Antibody) at a dilution of 1/12(Cytoplasm).



In comparison with the IHC on the left, the same paraffin-embedded Human colon cancer tissue is first treated with the fusion protein and then with 216581(Anti-IMMT Antibody) at dilution 1/12.



The image on the left is immunohistochemistry of paraffin-embedded Human breast cancer tissue using 216581(Anti-IMMT Antibody) at a dilution of 1/12.



In comparison with the IHC on the left, the same paraffin-embedded Human breast cancer tissue is first treated with fusion protein and then with D220856(Anti-IMMT Antibody) at dilution 1/12.



Gel: 8%SDS-PAGE, Lysate: 40 µg;
Lane 1-2: HeLa cells, 231 cells;
Primary antibody: 216581(IMMT Antibody) at dilution 1/250;
Secondary antibody: Goat anti rabbit IgG at 1/8000 dilution;
Exposure time: 1 minute



Product Description

Pioneering GTPase and Oncogene Product Development since 2010
