

## IL23R RABBIT PAB

**Cat.#:** S216310

**Product Name:** Anti-IL23R Rabbit Polyclonal Antibody

**Synonyms:**

**UNIPROT ID:** Q5VWK5 (Gene Accession - BC040720 )

**Background:** The protein encoded by this gene is a subunit of the receptor for IL23A/IL23. This protein pairs with the receptor molecule IL12RB1/IL12Rbeta1, and both are required for IL23A signaling. This protein associates constitutively with Janus kinase 2 (JAK2), and also binds to transcription activator STAT3 in a ligand-dependent manner.

**Immunogen:** Fusion protein of human IL23R

**Applications:** ELISA, WB, IHC

**Recommended Dilutions:** IHC: 20-May;WB: 500-2000;ELISA: 500-5000

**Host Species:** Rabbit

**Clonality:** Rabbit Polyclonal

**Isotype:** Immunogen-specific rabbit IgG

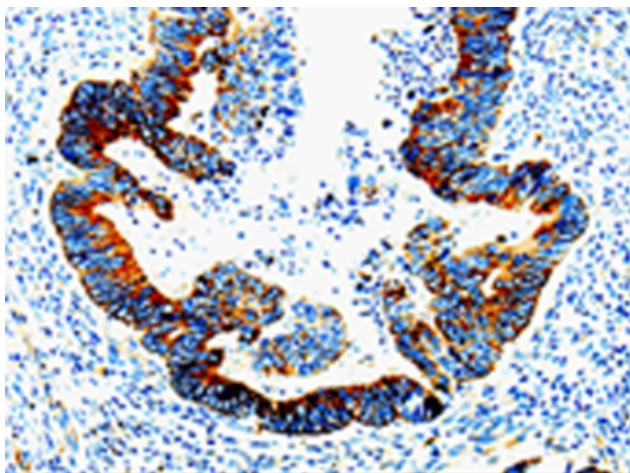
**Purification:** Antigen affinity purification

**Species Reactivity:** Human

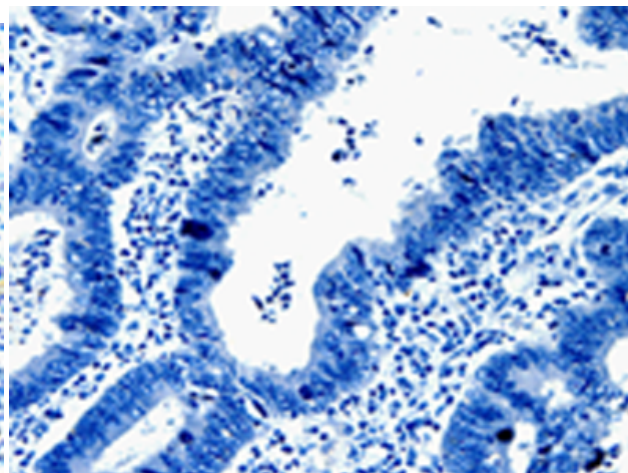
**Constituents:** PBS (without Mg<sup>2+</sup> and Ca<sup>2+</sup>), pH 7.4, 150 mM NaCl, 0.05% Sodium Azide and 40% glycerol

**Research Areas:** Signal Transduction, Epigenetics and Nuclear Signaling, Immunology

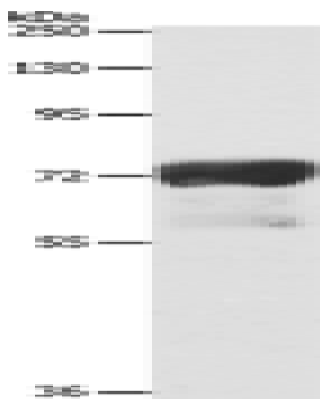
**Storage & Shipping:** Store at -20°C. Avoid repeated freezing and thawing



Immunohistochemistry analysis of paraffin embedded Human rectal cancer tissue using 216310(IL23R Antibody) at a dilution of 1/10(Cytoplasm).



In comparison with the IHC on the left, the same paraffin-embedded Human rectal cancer tissue is first treated with the fusion protein and then with 216310(Anti-IL23R Antibody) at dilution 1/10.



Gel: 8%SDS-PAGE, Lysate: 40  $\mu$ g;  
Lane: Human sigmoid tissue;  
Primary antibody: 216310(IL23R Antibody) at dilution 1/300;  
Secondary antibody: Goat anti rabbit IgG at 1/8000 dilution;  
Exposure time: 30 seconds