

## IL1RL1 RABBIT PAB

**Cat.#:** S216888

**Product Name:** Anti-IL1RL1 Rabbit Polyclonal Antibody

**Synonyms:** T1; ST2; DER4; ST2L; ST2V; FIT-1; IL33R

**UNIPROT ID:** Q01638 (Gene Accession - BC030975 )

**Background:** The protein encoded by this gene is a member of the interleukin 1 receptor family. Studies of the similar gene in mouse suggested that this receptor can be induced by proinflammatory stimuli, and may be involved in the function of helper T cells. This gene, interleukin 1 receptor, type I (IL1R1), interleukin 1 receptor, type II (IL1R2) and interleukin 1 receptor-like 2 (IL1RL2) form a cytokine receptor gene cluster in a region mapped to chromosome 2q12. Alternative splicing of this gene results in multiple transcript variants.

**Immunogen:** Fusion protein of human IL1RL1

**Applications:** ELISA, WB, IHC

**Recommended Dilutions:** IHC: 50-200;WB: 500-2000;ELISA: 5000-10000

**Host Species:** Rabbit

**Clonality:** Rabbit Polyclonal

**Isotype:** Immunogen-specific rabbit IgG

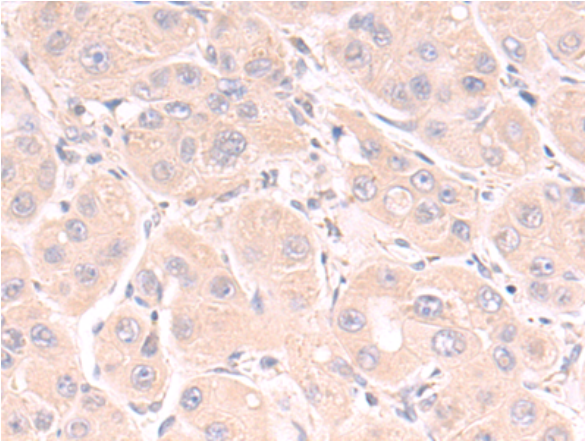
**Purification:** Antigen affinity purification

**Species Reactivity:** Human

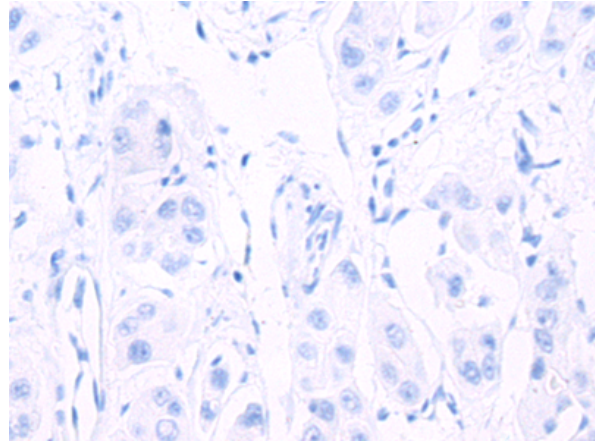
**Constituents:** PBS (without Mg<sup>2+</sup> and Ca<sup>2+</sup>), pH 7.4, 150 mM NaCl, 0.05% Sodium Azide and 40% glycerol

**Research Areas:** Cardiovascular, Immunology

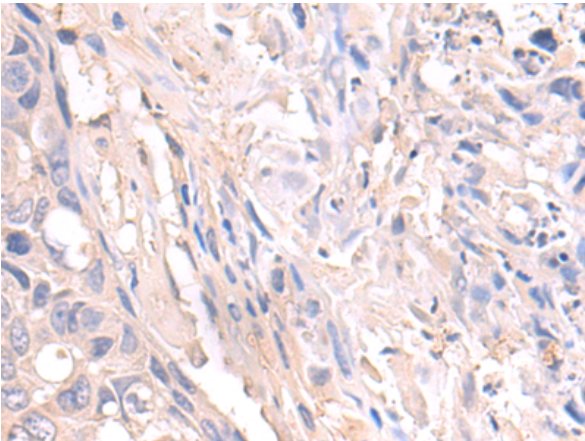
**Storage & Shipping:** Store at -20°C. Avoid repeated freezing and thawing



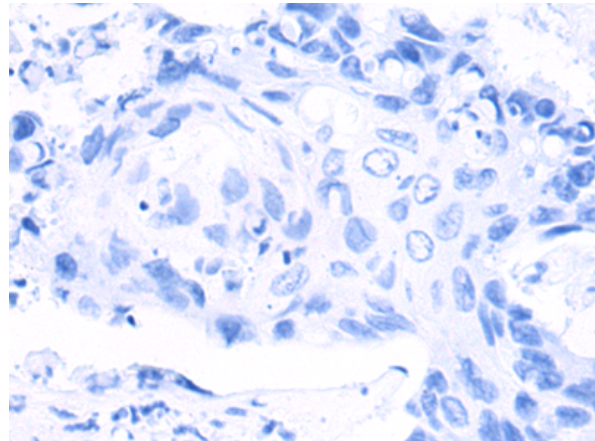
Immunohistochemistry analysis of paraffin embedded Human liver cancer tissue using 216888(ILIRL1 Antibody) at a dilution of 1/75(Cytoplasm).



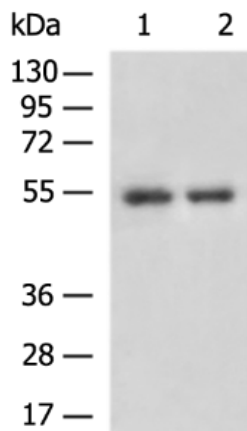
In comparison with the IHC on the left, the same paraffin-embedded Human liver cancer tissue is first treated with the fusion protein and then with 216888(Anti-ILIRL1 Antibody) at dilution 1/75.



The image on the left is immunohistochemistry of paraffin-embedded Human lung cancer tissue using 216888(Anti-ILIRL1 Antibody) at a dilution of 1/75.



In comparison with the IHC on the left, the same paraffin-embedded Human lung cancer tissue is first treated with fusion protein and then with D221414(Anti-ILIRL1 Antibody) at dilution 1/75.



Gel: 8%SDS-PAGE, Lysate: 40 µg;  
Lane 1-2: Human stomach tissue, Human placenta tissue lysates;  
Primary antibody: 216888(ILIRL1 Antibody) at dilution 1/800;  
Secondary antibody: HRP-conjugated Goat anti rabbit IgG at 1/5000 dilution;  
Exposure time: 10 minutes



# Product Description

Pioneering GTPase and Oncogene Product Development since 2010

---