

## IL18 RABBIT PAB

**Cat.#:** S216578

**Product Name:** Anti-IL18 Rabbit Polyclonal Antibody

**Synonyms:** IGIF; IL-18; IL-1g; IL1F4

**UNIPROT ID:** Q14116 (Gene Accession - BC007007 )

**Background:** The protein encoded by this gene is a proinflammatory cytokine of the IL-1 family that is constitutively found as a precursor within the cytoplasm of a variety of cells including macrophages and keratinocytes. The inactive IL-18 precursor is processed to its active form by caspase-1, and is capable of stimulating interferon gamma production, and of regulating both T helper (Th) 1 and Th2 responses. This cytokine has been implicated in the injury of different organs, and in potentially fatal conditions characterized by a cytokine storm. In humans, IL-18 gene is located on chromosome 11. Alternatively spliced transcript variants encoding different isoforms have been found for this gene.

**Immunogen:** Fusion protein of human IL18

**Applications:** ELISA, WB, IHC

**Recommended Dilutions:** IHC: 50-100;WB: 500-2000;ELISA: 5000-10000

**Host Species:** Rabbit

**Clonality:** Rabbit Polyclonal

**Isotype:** Immunogen-specific rabbit IgG

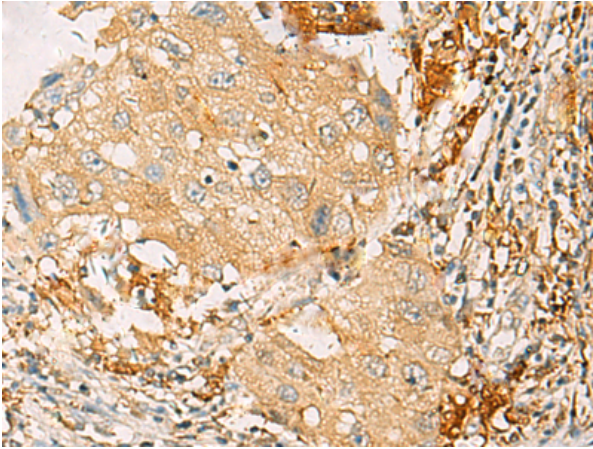
**Purification:** Antigen affinity purification

**Species Reactivity:** Human

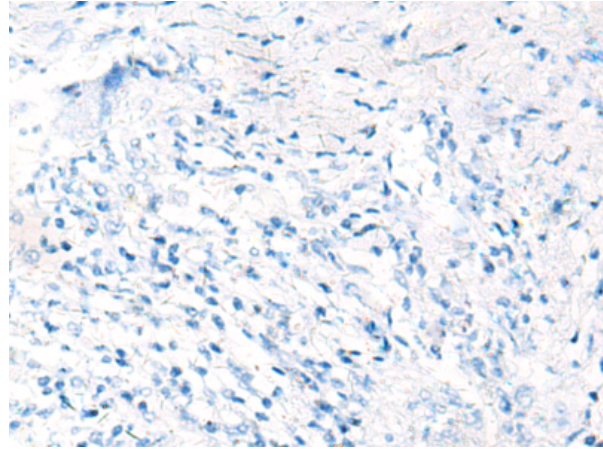
**Constituents:** PBS (without Mg<sup>2+</sup> and Ca<sup>2+</sup>), pH 7.4, 150 mM NaCl, 0.05% Sodium Azide and 40% glycerol

**Research Areas:** Cardiovascular, Cancer, Immunology

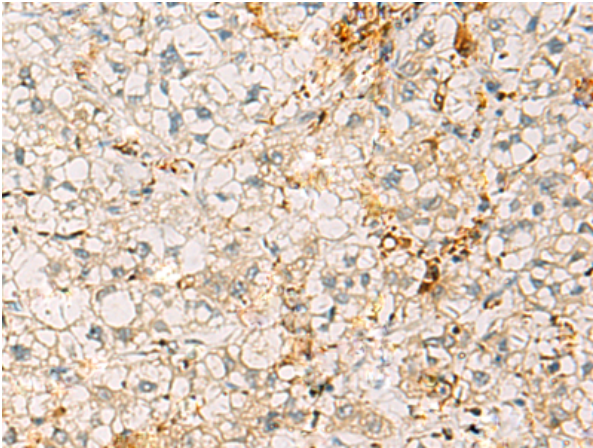
**Storage & Shipping:** Store at -20°C. Avoid repeated freezing and thawing



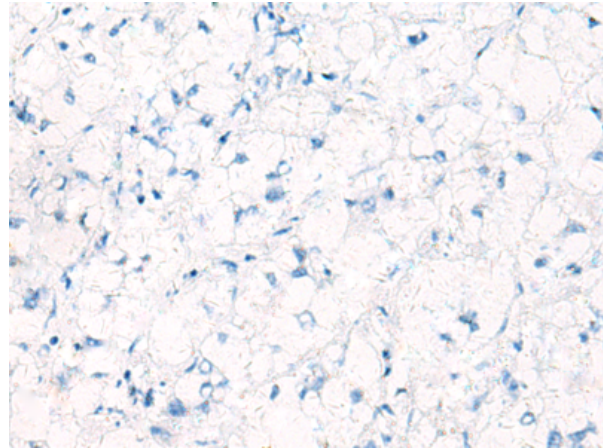
Immunohistochemistry analysis of paraffin embedded Human breast cancer tissue using 216578(IL18 Antibody) at a dilution of 1/40 (Secreted).



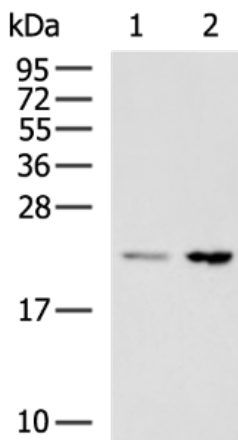
In comparison with the IHC on the left, the same paraffin-embedded Human breast cancer tissue is first treated with the fusion protein and then with 216578 (Anti-IL18 Antibody) at dilution 1/40.



The image on the left is immunohistochemistry of paraffin-embedded Human liver cancer tissue using 216578 (Anti-IL18 Antibody) at a dilution of 1/40.



In comparison with the IHC on the left, the same paraffin-embedded Human liver cancer tissue is first treated with fusion protein and then with D220831 (Anti-IL18 Antibody) at dilution 1/40.



Gel: 12% SDS-PAGE, Lysate: 40 µg;  
 Lane 1-2: HeLa and HepG2 cell lysates;  
 Primary antibody: 216578 (IL18 Antibody) at dilution 1/800;  
 Secondary antibody: HRP-conjugated Goat anti rabbit IgG at 1/5000 dilution;  
 Exposure time: 20 seconds



# Product Description

Pioneering GTPase and Oncogene Product Development since 2010

---