

## IL17C RABBIT PAB

**Cat.#:** S220622

**Product Name:** Anti-IL17C Rabbit Polyclonal Antibody

**Synonyms:** CX2; IL-17C

**UNIPROT ID:** Q9P0M4 (Gene Accession - NP\_037410 )

**Background:** The protein encoded by this gene is a T cell-derived cytokine that shares the sequence similarity with IL17. This cytokine was reported to stimulate the release of tumor necrosis factor alpha and interleukin 1 beta from a monocytic cell line. The expression of this cytokine was found to be restricted to activated T cells.

**Immunogen:** Synthetic peptide of human IL17C

**Applications:** ELISA, WB, IHC

**Recommended Dilutions:** IHC: 50-200;WB: 500-2000;ELISA: 2000-5000

**Host Species:** Rabbit

**Clonality:** Rabbit Polyclonal

**Isotype:** Immunogen-specific rabbit IgG

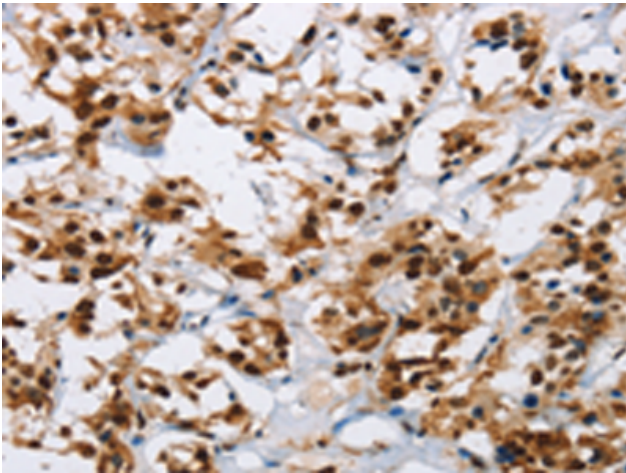
**Purification:** Antigen affinity purification

**Species Reactivity:** Human

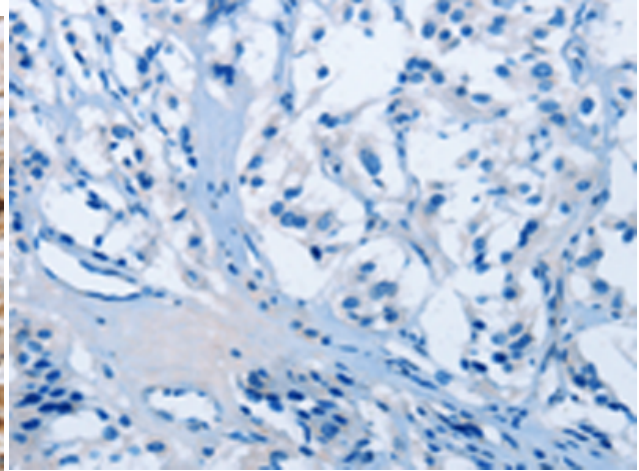
**Constituents:** PBS (without Mg<sup>2+</sup> and Ca<sup>2+</sup>), pH 7.4, 150 mM NaCl, 0.05% Sodium Azide and 40% glycerol

**Research Areas:** Immunology

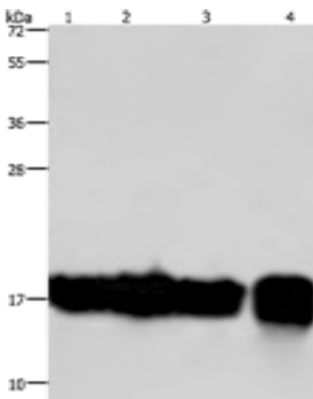
**Storage & Shipping:** Store at -20°C. Avoid repeated freezing and thawing



Immunohistochemistry analysis of paraffin embedded Human thyroid cancer tissue using 220622(IL17C Antibody) at a dilution of 1/50(Secreted).



In comparison with the IHC on the left, the same paraffin-embedded Human thyroid cancer tissue is first treated with the synthetic peptide and then with 220622(Anti-IL17C Antibody) at dilution 1/50.



Gel: 10%SDS-PAGE, Lysate: 40 µg;  
Lane 1-4: A549 cells, K562 cells, Raji cells,  
human fetal intestine tissue;  
Primary antibody: 220622(IL17C Antibody) at  
dilution 1/300;  
Secondary antibody: Goat anti rabbit IgG at  
1/8000 dilution;  
Exposure time: 20 seconds